



AT&T Fleet Management (AFM) Platform Update Release Notes

What's New in AFM platform – Version 9.0 Release

Published April 2023

NOTE: The images shown here are for illustration purposes only and may appear different in the software as we approach the final release.

Restricted Data Mode

Restricted Data Mode (Feature Preview)

We have been working hard on improving the functionality of [Personal Mode](#), and is happy to announce the next iteration of this feature, now known as **Restricted Data Mode!**

Restricted Data Mode allows drivers and fleet managers to temporarily forego recording GPS coordinates and/or GPS speed on their vehicles. When Restricted Data Mode is enabled, location features in AFM that use GPS such as position, trips, speed profiles, and GPS based exceptions, are not available. The key difference between the Personal Mode and the new Restricted Data Mode is that the GPS record is not stored in the database during that time period.

Features that do not use GPS and other restricted data points will continue to be available without any interruptions and displayed as normal. Since GPS data is not accessible in Restricted Data Mode, other features such as reports or Add-Ins will function differently when Restricted Data Mode is enabled.

Restricted Data Mode is intended for Customer use cases such as:

- Leasing companies, where the leasing company does not need to see where the vehicles are, but requires maintenance data to automate vehicle maintenance. For example, data can be shared with the Customer database, where full access to GPS data is maintained.



- Employee perks, where drivers are allowed to drive company vehicles outside of work hours for personal use and do not require vehicle tracking during these hours.
- Contractor vehicle use, where contractors drive their personal vehicle for business use and require vehicle tracking for business use but not personal use.
- Law enforcement, where some operations may require location-based services to be disabled.

Stay tuned for a dedicated announcement about Restricted Data Mode, along with a new user guide!

*** NOTE:** Restricting GPS speed will affect safety and other rules that use GPS speed to not create events (for example, collision detection, harsh braking, harsh cornering, speeding, and so on). Additionally, reporting that makes use of GPS speed will also not function. For these reasons, we recommend not restricting GPS speed unless you absolutely need to do so.

System Settings ?

General Maps User account policy Add-Ins Purge Marketplace Certificates Support **Restrictions** Route completion

RESTRICTED DATA MODE

- Enable restricted data mode
enabling this setting will allow assets to enter a restricted data mode where their GPS data along with other data points will not be tracked.

Choose which data points are restricted when an asset has this mode turned on. GPS coordinates will always be restricted.

- GPS coordinate
 GPS speed

Asset Edit AR123456 Show help

Asset Health Audio feedback Extended services Rate plan Settings

ASSET INFORMATION

Name/Description:

Current driver: Unknown driver [Assign driver](#)

Asset type:

Groups:

Messaging status groups:

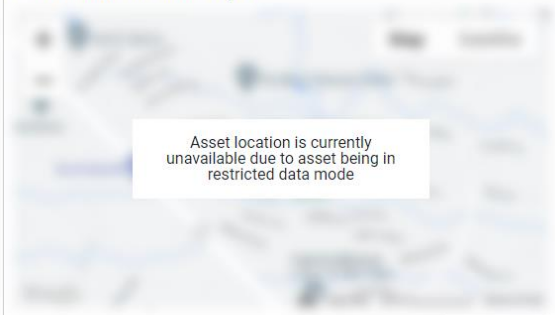
Restricted data mode:
 Allow Rules to turn restricted data mode off

While the asset is in restricted data mode, location and speed data will not be recorded.
 Changes to what data is not recorded in restricted data mode can be made in on the [Restricted Data Mode](#) settings page.

Asset Usage Last 7 days

No activity for the last 7 days

Location on 9/28/2022 at 7:15:01 pm



Last recorded location:
Brampton, ON

Assets

Additional property sets for assets

You can now add additional properties for your assets based on the Group the asset is a part of.



From the menu, navigate to **Administration > System ... > System Settings**, and then select the **Additional properties** tab to configure additional property sets for your assets.

Following configuration, these additional properties are displayed in the **Additional Properties** area on the **Asset Edit** page. These properties can also be displayed on the **Vehicles & Assets** page by enabling the new columns you would like to see.

*** NOTE:** You can (as always) rearrange the columns on the **Vehicles & Assets** page as you would like to see them.

Lastly, you can also add these additional properties into a Device excel report by adding a custom header into the datasheet with the format: [CustomProperty].Property.
For example, [CustomProperty].Pick up date.

Save

System Settings Show help

General Maps User account policy Add-Ins Purge Marketplace Certificates Support Restrictions Route completion **Additional properties**

Additional asset property sets

Add property sets to your assets to manually track additional information that is not built-in the application. You will see the additional fields on the Asset Edit page in the order below. Change the order of the property sets by dragging the left reorder icon up and down.

Add property set +		
⋮ Renting	Groups: Company group	Properties: 4 ▼
⋮ SVR	Groups: Company group	Properties: 0 ▼

Save

Remove

Cancel

View on map

Asset Edit AR12345 Show help

Asset Health Audio feedback Extended services Rate plan Settings

ADDITIONAL PROPERTIES

Renting

Pick up date:

Drop off date:

Drop off location:

Name	License plate	VIN	
ABC123 Vehicle	ABCD123	2ABBURHE4GC580000	<input checked="" type="checkbox"/> Name
ABC234 Vehicle	TYLD008	5FNRL6005KB501000	<input checked="" type="checkbox"/> Current driver
ABC345 Vehicle, Gasoline or Petrol... 3+	CLKY008	5FNRL6H12KB501000	<input checked="" type="checkbox"/> VIN
ABC456 Vehicle... 2+	BHN123	2HGFG12367J00123	<input checked="" type="checkbox"/> License plate
ABC567 Vehicle, Non Communicating	ABCD1003	3HKFG12367J00123	<input checked="" type="checkbox"/> Serial number
ABC678 Vehicle, Non Communicating 12/20/20 2:00:00 am	CDE1234	8LGFG12367J01234	<input checked="" type="checkbox"/> Odometer
ABC798 Vehicle, Non Communicating... 2+ 03/22/22 4:19:37 am	GHIJ654	AV2A4FFC53B330123	<input checked="" type="checkbox"/> Engine hours
ABC890 Vehicle... 2+ 04/10/18 4:05:54 pm	UILK123	DA1LGCFP4EA041234	<input checked="" type="checkbox"/> Comments
			<input checked="" type="checkbox"/> Rate plan

Reset to default

Additional Properties

Renting ^

Pick up date

Drop off date

Drop off location

SVR v

Rules

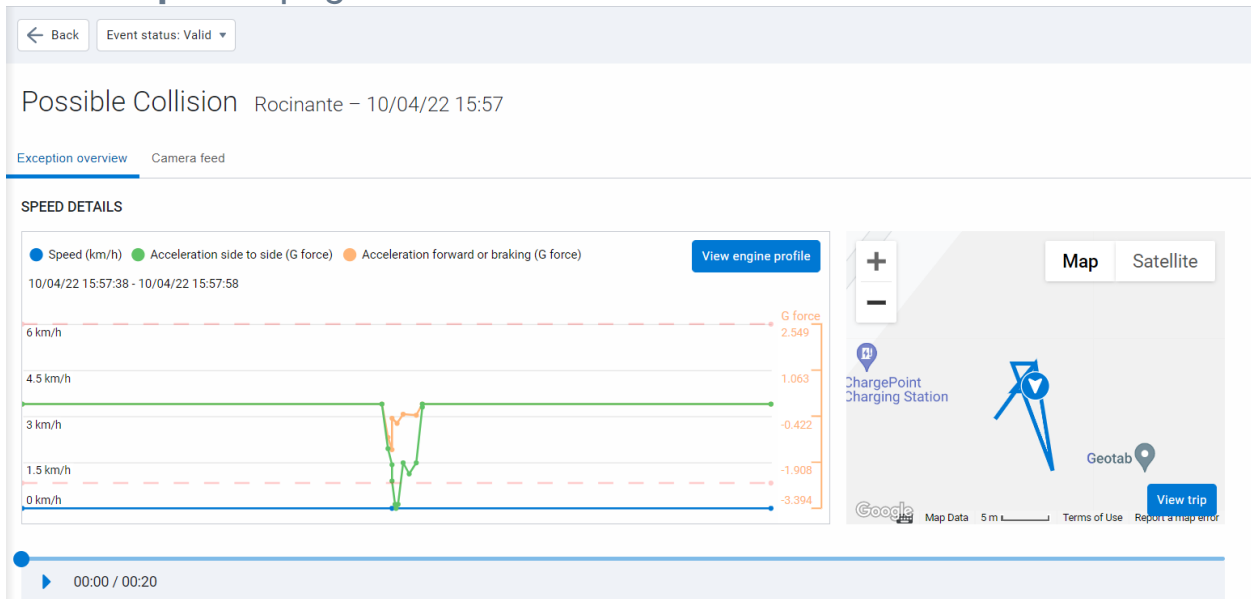
Exception Events page for Possible Collisions (Feature Preview)

By enabling **Exception details** you can review possible collisions in an improved format that includes the following:

- Relevant data points to be viewed on the graph that include speed, acceleration side-to-side and acceleration forward, or braking.
- A 10-second window before and after the event to have a full overview.

- An adjusted trip history graph showing you the relevant location of the event.

Try it out by clicking on a **Possible Collision** exception on the **Exceptions** page.



New exception filter




We've made it easier for you to either include or exclude dismissed events using the **Include dismissed events** toggle in the **Options** menu under **Exceptions**.

Options ▲
Sort by: Duration ▼
Report ▼
Camera exceptions

Date Period	Display Options		
Today	View by	<input checked="" type="button" value="Vehicle"/> <input type="button" value="Driver"/>	
Yesterday	Assets	<input type="text" value="Search vehicles"/> <input type="button" value="▼"/>	<input type="button" value="Reset selection"/>
This week	Selected: None		
Last week	Rules	<input type="text" value="Search rules"/> <input type="button" value="▼"/>	<input type="button" value="Reset selection"/>
This month	Selected: None		
Last month	Include dismissed events:	<input checked="" type="button" value="Yes"/> <input type="button" value="No"/>	
Custom			<input type="button" value="Apply changes"/>

Stock Idling rule conditions can now be modified

The Idling stock rule's conditions can now be modified to suit your needs. Select **Edit conditions** to modify the conditions of the rule to suit your definition of idling. You can raise or lower the default value, or incorporate power take-off (PTO) usage into the rule. For example, you can specify if an asset has PTO engaged while the ignition is on, the idling rule will not trigger, but if the PTO is not engaged and ignition is on over the default time value, The AFM database will log an idling exception.

On **Off** **Idling**   

Total duration longer than: minutes seconds **Edit conditions**

This rule identifies preventable idling. In addition to wasting fuel, idling is often associated with unproductive drivers. The default rule is set to 3 minutes and 21 seconds. **Create custom Idling rule** e emissions, minutes 21

Note: This rule will only be published to group 'Company group' (customized rules can still be published to other groups).

Reports

Option to exclude or include dismissed events

The **Exceptions Detail, Exceptions Summary, and Risk Management** reports have now the option to include or exclude dismissed events using the **Include dismissed events** toggle.

Groups filter All groups selected

🔍

Save
Cancel
Export
View report

Report Default Exceptions Detail Report Show help

Report view

Dashboard

Email report

📄
📺
✉️
🚫
⚙️
🔧
🔗
🔍
🔧
📺
>

Refresh period: Daily

Next run: 07/29/22 12:07

Belonging to: Select groups...

Everything

ADDITIONAL REPORT OPTIONS

Run report by: Vehicles & Assets Driver

Include dismissed events: Yes No

Exception rules

Malaysia ringgit (MYR) and Philippine peso (PHP) currencies available in The AFM database

As a result of expanding our coverage of Customers around the world, we've added the Malaysia ringgit (MYR) and Philippine peso (PHP) currencies to The AFM database to help with understanding currency costs amongst Customers who span multiple countries. These currencies are available for AFM users on the **Options** page and the **Maintenance Records** page.

Currency displayed as:

Philippine peso (PHP) ▼

The exchange rates used in currency conversions are from the Bank of Canada. For more details, please read our [Terms and Conditions](#).

Currency:
(optional)

Malaysian ringgit (MYR) ▼

[Edit default currency](#)

All currency values will be converted to the users' preferred currency when displayed. Exchange rates used in currency conversions are from the Bank of Canada. For details, please read our full [Terms and Conditions](#).

Map

Latitude/Longitude displayed in Share Asset Location

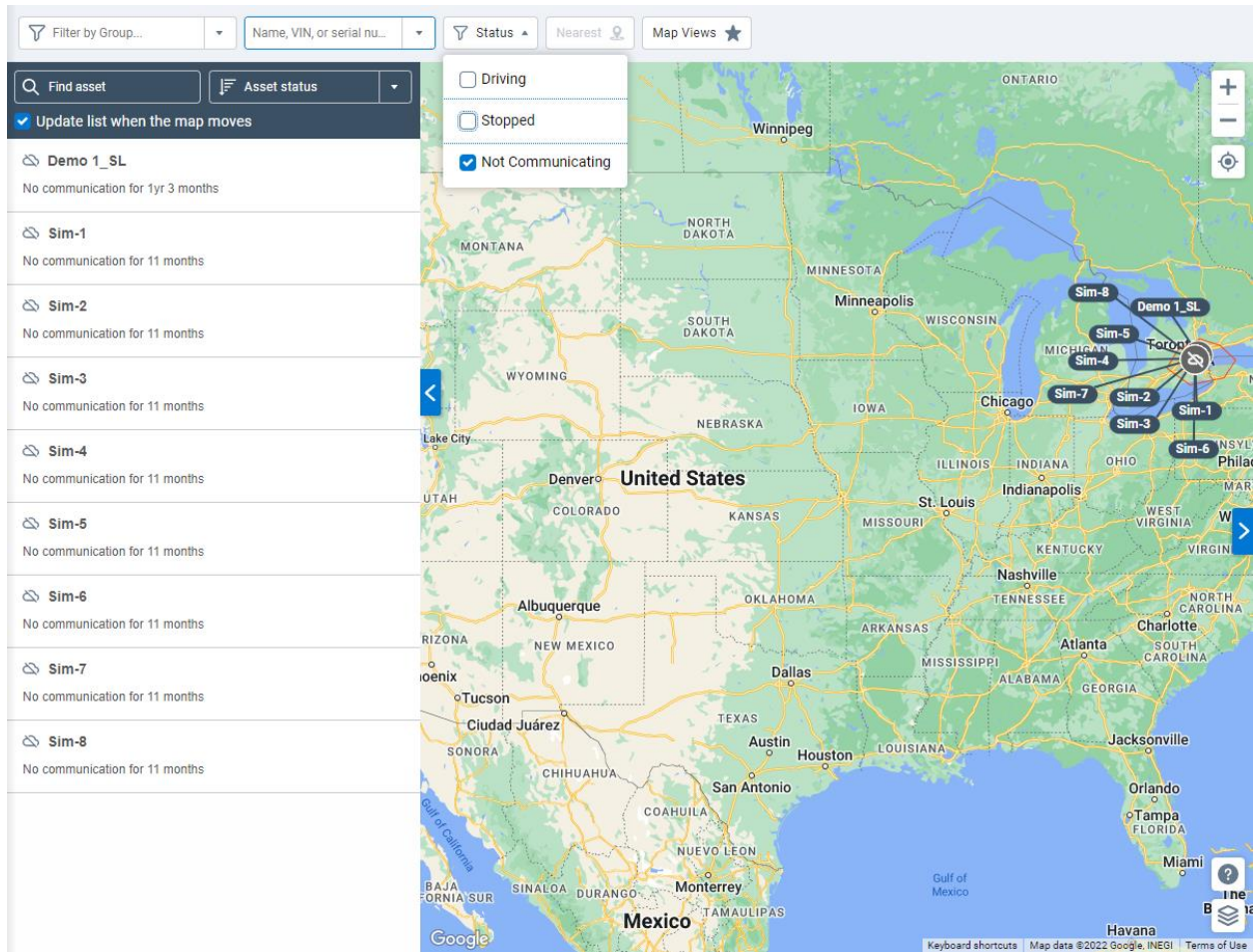
Street addresses are not always useful or applicable for off-road assets. To improve location sharing, the **Share Asset Location** feature now displays assets' last known latitude and longitude when a conventional address is not available to allow users with the shared link to reference its approximate location.

Asset Status filter

We've added a new **Status** filter to quickly filter assets of interest. The filter has three options enabled by default. These options are as follows:

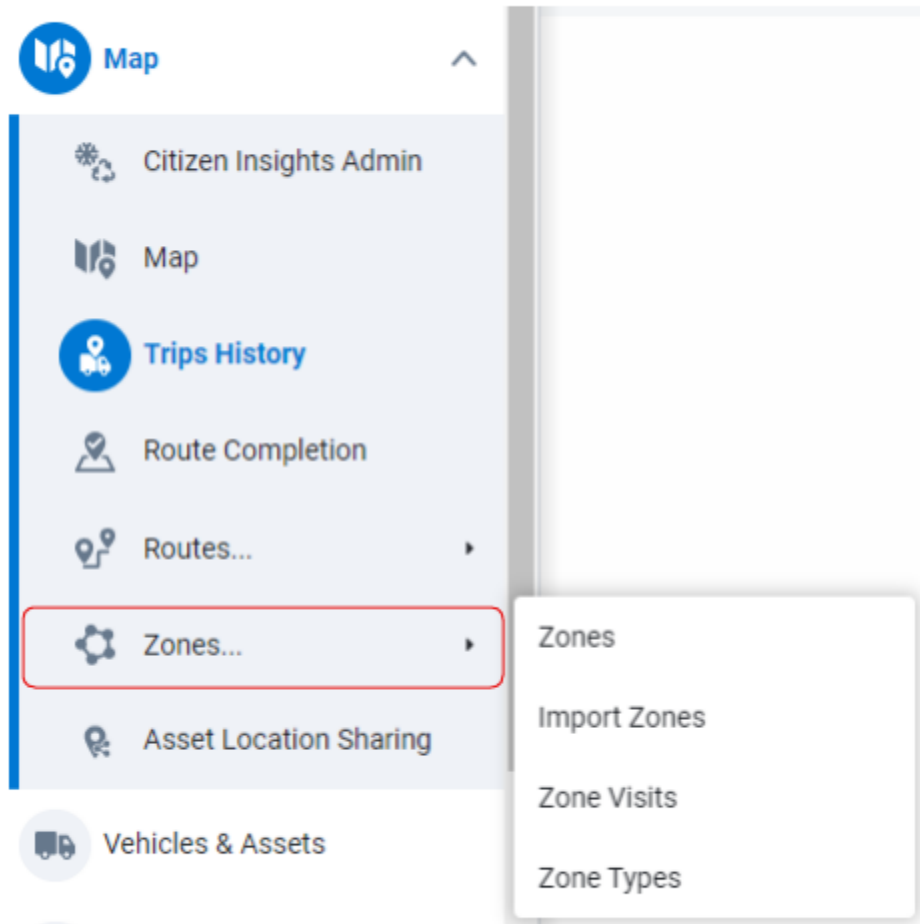
- Driving
- Stopped
- Not Communicating

Only those assets meeting the **Status** filter criteria are displayed on the Map and asset list for quick reference.



Zones moved under Maps in the navigation menu

To improve ease of navigation, the **Zones**, **Import Zones**, **Zone Visits**, and **Zone Types** pages are now available under **Maps > Zones**.



Save map views

You can now save map views for quick access in the future. You can do the following:

- Select the **Map viewport** checkbox to save the area of the map currently displayed.
- Select the **Map settings** checkbox to save all related Map settings.

With both options selected, the following details are saved with the map view:



- Group, Assets, and Asset status
- Map Provider, Show routes, and Show Traffic options
- Labels, Zones, and Weather layers
- Update list when map moves and List Sorting options

Saved map views can be uniquely named for easy recall and future access using the **Map Views** button above the map. Furthermore, saved map views can be edited and deleted when no longer needed.

Save Map View ✕

Save the viewport and/or settings currently applied for future reference. Select which options to include:

- Viewport
- Settings

The following will be saved:

- Map area and zoom level
- Filter and sort tools
- Options and Layers
- List updates with map

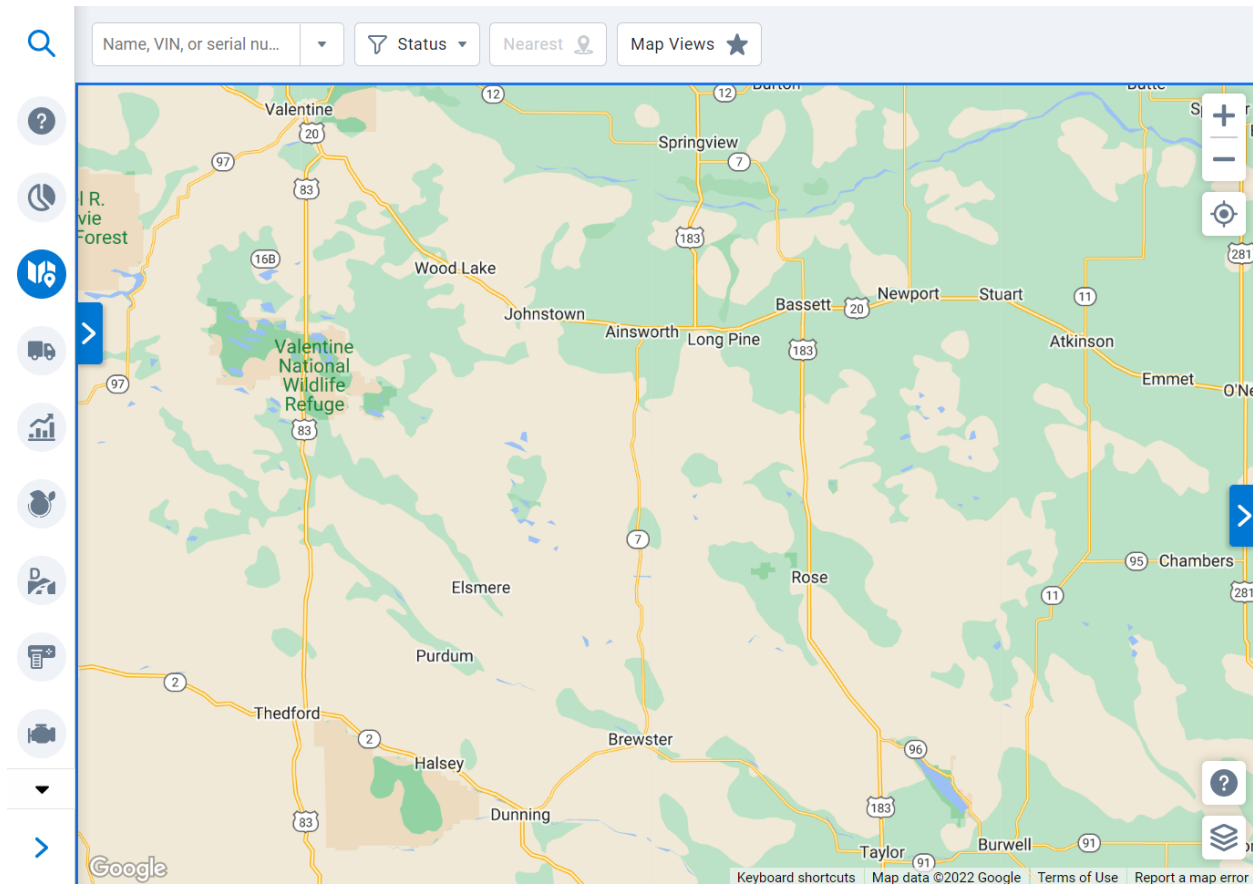
Saved view name:

 Show as default

Cancel Save view

Zoom controls and My Location button relocated on the map

We've moved the **Zoom** controls and **My Location** buttons to the top-right of the map.



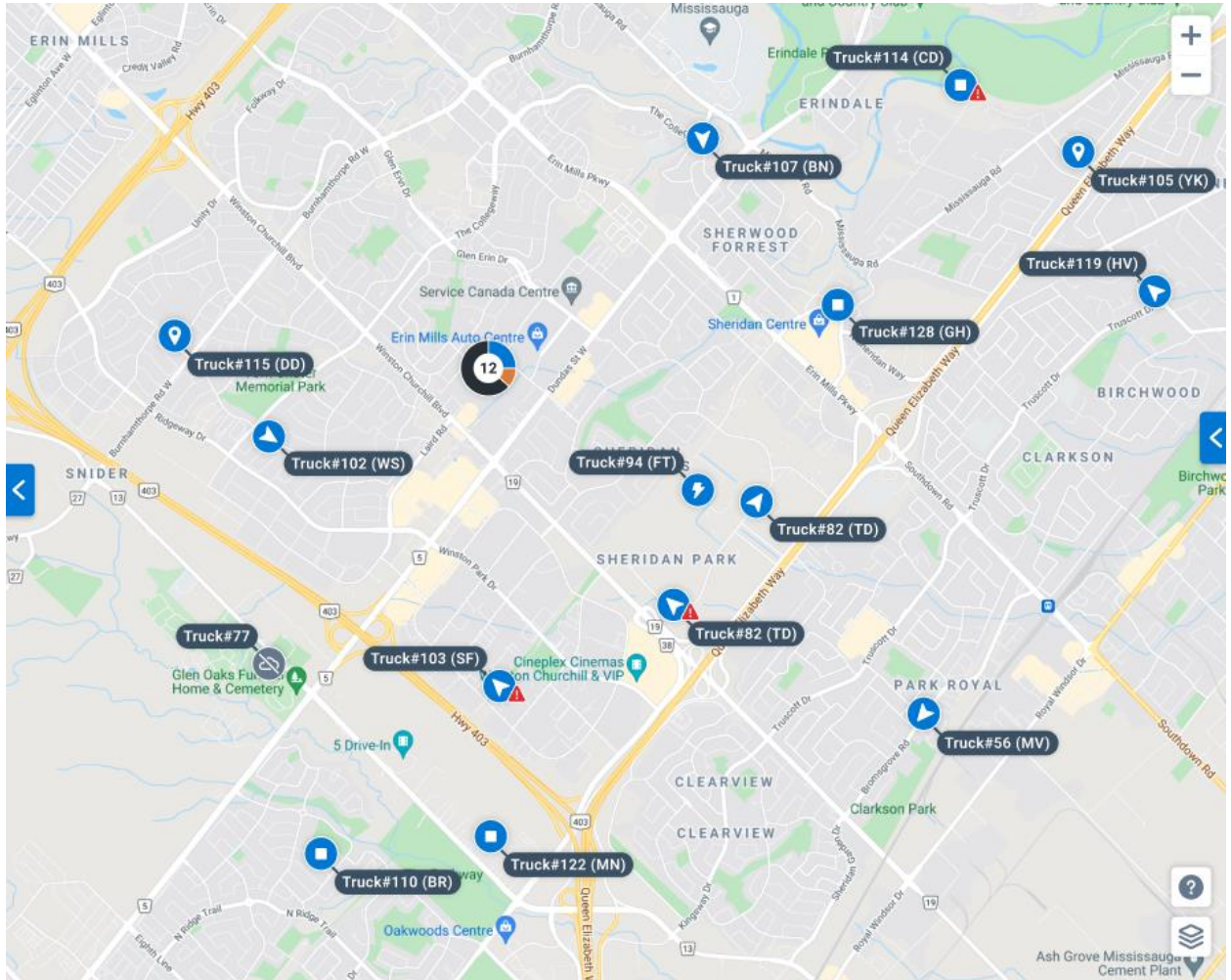
New asset icons on the map

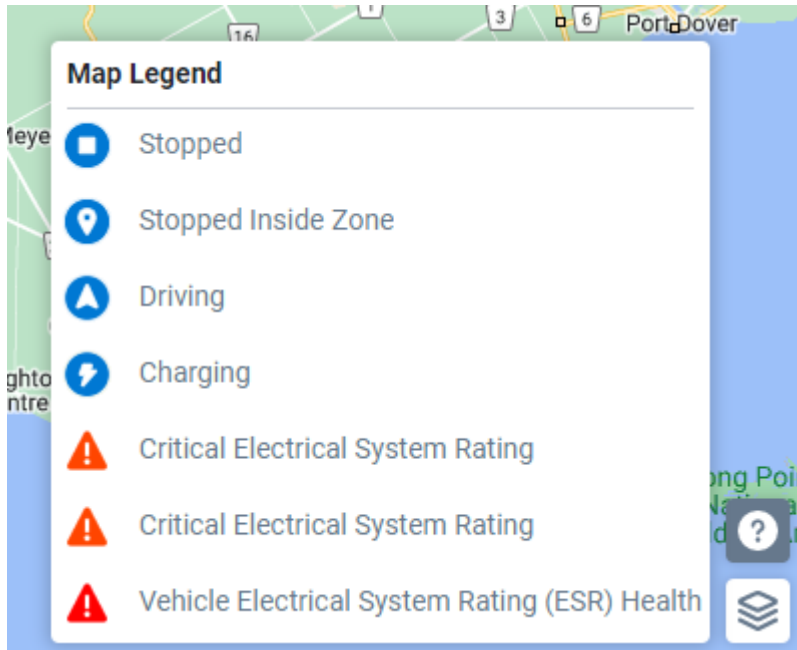
We've introduced new vehicle icons to improve readability of the map. New icons include new status icons (for **Driving**, **Stopped**, **Stopped inside Zone**, and **Charging** statuses), as well as a new **Exception** icon (for vehicles with active exceptions). The map legend has been revised to include these new icons and their meanings.

If the number of assets in a particular area is too large to be displayed with individual icons at the selected zoom level, they are now clustered together with a new circular icon showing the total number of vehicles present in the area. Hovering over the circular icon provides a breakdown of the number of vehicles in each of the



indicated states (Driving, Stopped, Stopped Inside Zone, and Charging).

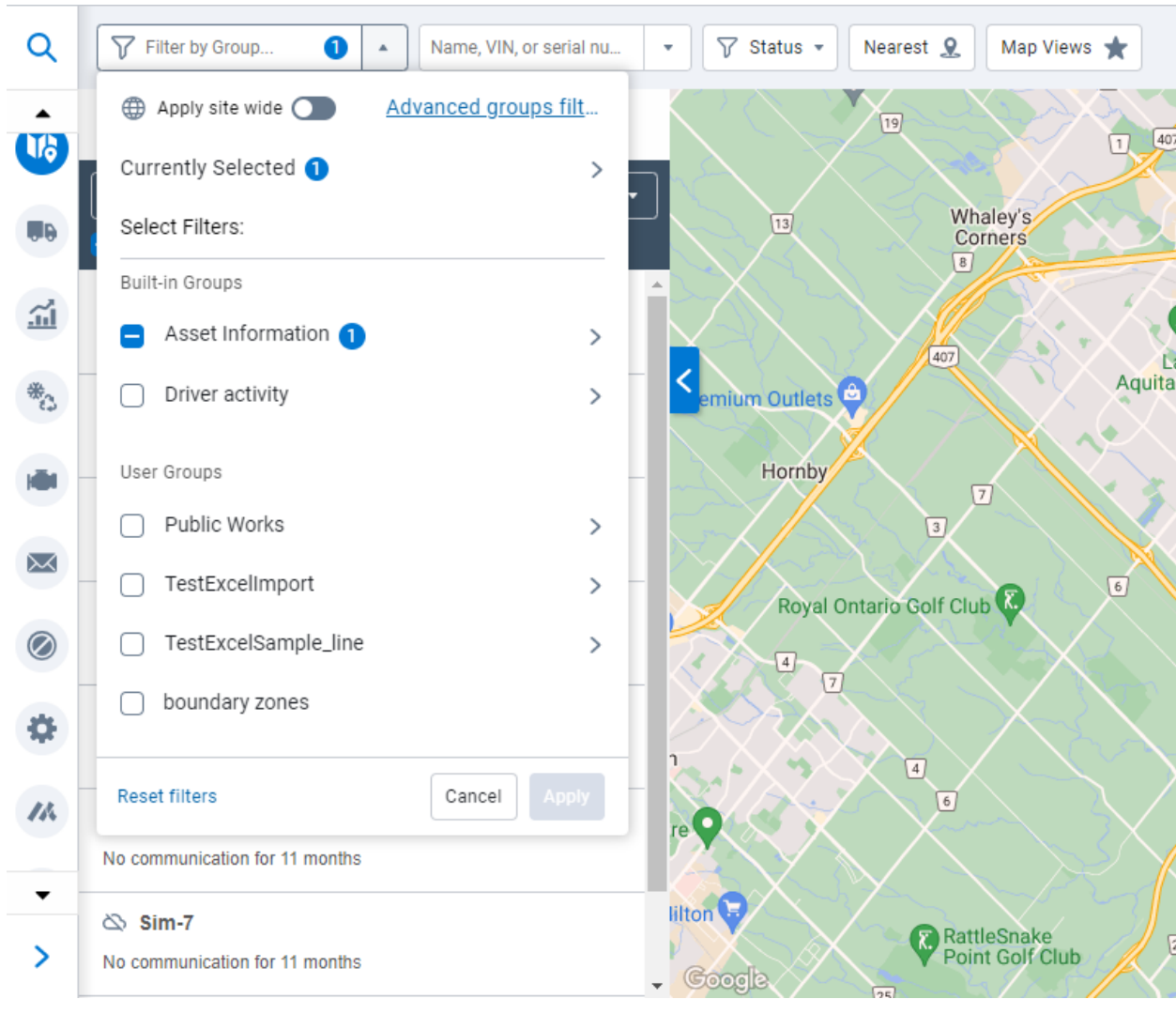




Groups filter enabled in Map (Feature Preview)

With the **New Groups Filter** enabled in Feature Preview, you can now filter which assets are displayed on the map according to selected **Groups**. Both Built-in and User groups can be used, with the option to create advanced group filters using **AND** and **OR** operations.

Additionally, filtering for particular groups on the map also colors the displayed assets with the color of the group the asset is associated with. For example, you may want to differentiate assets displayed on the map by asset type. You can use the **Groups** filter to select individual asset type groups, and then you will see your assets displayed on the map with colors associated with their asset type group.



Trips History

Trip categories on the Trips History page (Feature Preview)

We've added new trip categorization columns to the **Trips History** page so you can quickly filter trips by **Business**, **Personal**, or **Uncategorized**. These categories can be enabled in the **Options** menu at the top of the page by setting the **Trip categories** option to **Show**. All trips are shown by default but can be filtered by selecting the desired category.

Options Summary Live positions Report Show all trips

Date Period	Display Options
Today	Include archived (historical) data <input type="checkbox"/> On <input checked="" type="checkbox"/> Off
Yesterday	Exclude stops Under <input type="text" value="0"/> minutes
This week	Over <input type="text" value="0"/> minutes
Last week	Always show latest trip and current trip in progress <input type="checkbox"/> On <input checked="" type="checkbox"/> Off
This month	Trip categories <input type="button" value="Show"/> <input type="button" value="Hide"/>
Last month	<div style="border: 1px solid #ccc; padding: 5px;"> All Business Personal Uncategorized </div>
Custom	

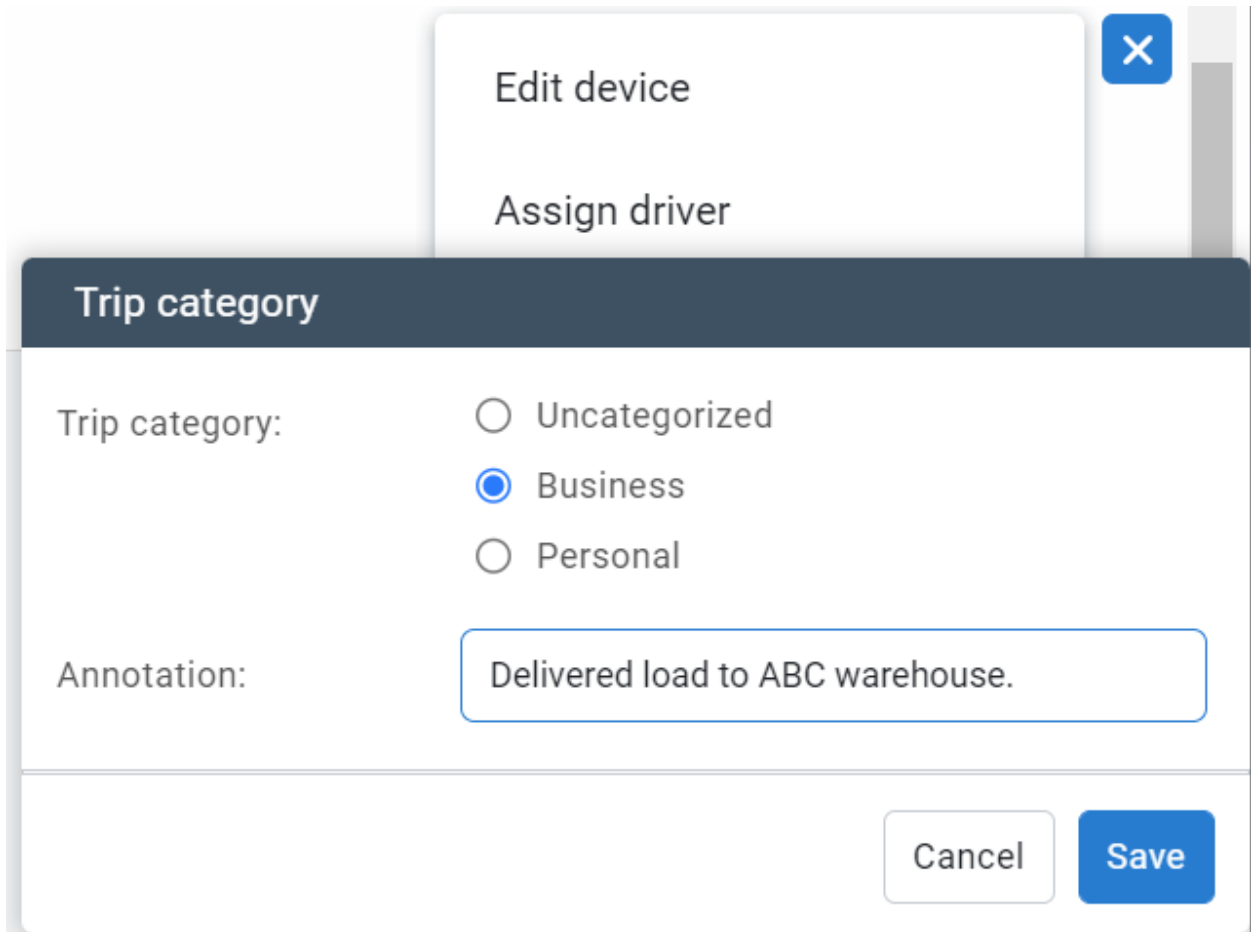
Trips without an assigned driver have no trip categorization information. If a driver is assigned to the asset, the category is displayed along with a hover icon that can be moused over for the annotation text.

Wed Aug 31 Truck123 - Test Driver (testdriver)		Total stop duration	2d 19h
		Total driving duration	44m 36s
		Total idling duration	40s
		Total distance	21km

Location	Activity	Duration	Distance	Category
123 Main Street, Mississauga, ON L5M 7N4, Canada	Driving	15:34 - 15:56	21m 36s	9km
	Driving duration			Uncategorized
	Distance			
	Category			
456 Main Street, Mississauga, ON L5M 7N4, Canada	Stopped	15:56 - 16:10	13m 37s	11s
	Stop duration			
	Idling			

Annotation is empty.

You can edit trip categories and annotations by clicking the blue **More Options** icon and selecting **Change category**.



Edit device

Assign driver

Trip category

Trip category:

Uncategorized

Business

Personal

Annotation:

Delivered load to ABC warehouse.

Cancel Save

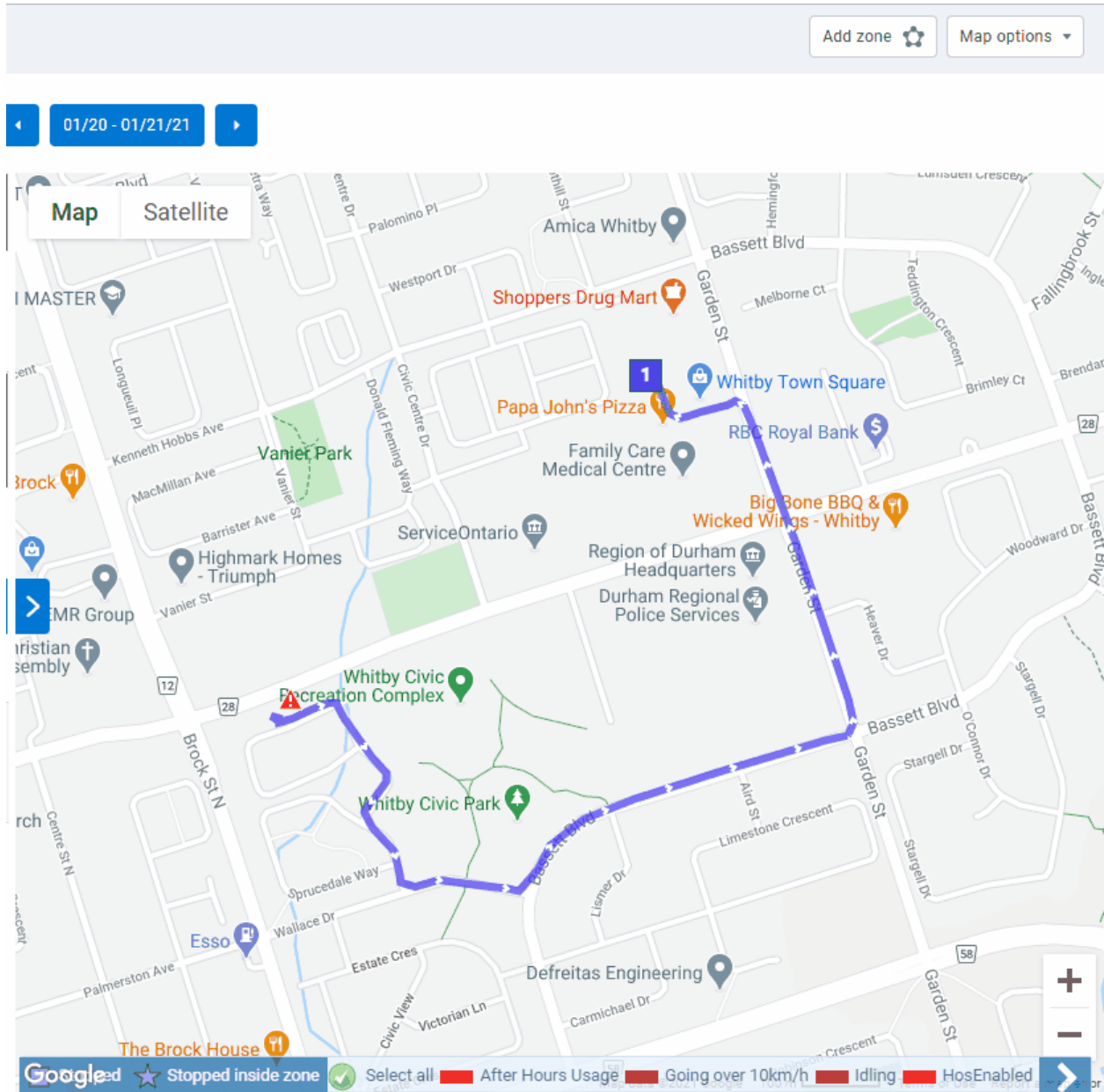
Refer to [What's New in AFM Drive - Version 6.0](#) for more information on trip categorization.

Trip Replay out of Feature Preview

The Trip Replay feature is now out of Feature Preview. You can replay trips for single or multiple vehicles to better understand how the driver's trip progressed.

To see a Trip Replay, navigate to the **Trips History** page, select the trips you want to replay, and choose **Show replay** from the **Map options** dropdown. While watching the animated trip history, you can click **play** or **pause** at any time. You can also change the replay speed and use the timestamp button to jump to a desired section of the trip.

Additionally, new replay speed options of 0.5x, 1x, 3x, and 5x speed have been added.



Historical data not displayed by default when viewing trips

When a trip is selected for display from the Map or from an Asset Card, the **Include archived (historical) data** option is now set to **Off** by

default. This change is meant to reduce potential confusion with trips taken by past vehicles with similar names.

Options ▲
Summary
Live positions
Report ▼
Show all trips 📄

Date Period	Display Options	
Today	Include archived (historical) data	On <input type="checkbox"/> Off <input checked="" type="checkbox"/>
Yesterday	Exclude stops	Under <input type="text" value="0"/> minutes
This week		Over <input type="text" value="0"/> minutes
Last week		
This month	Always show latest trip and current trip in progress	On <input type="checkbox"/> Off <input checked="" type="checkbox"/>
Last month		
Custom		

Trip Categorization report

A number of bugs that prevented the Trip Categorization report from successfully generating are fixed. These fixes are added to AFM versions 6.0, 7.0 and 8.0 as well.

Include assets with no distance in Trip Summary report

Asset utilization is an important data point for understanding which assets in your fleet may be over or under utilized. The **Trips Summary** report now includes assets which have not reported any distance for the specified time frame, allowing you to get a better picture of your least utilized assets.

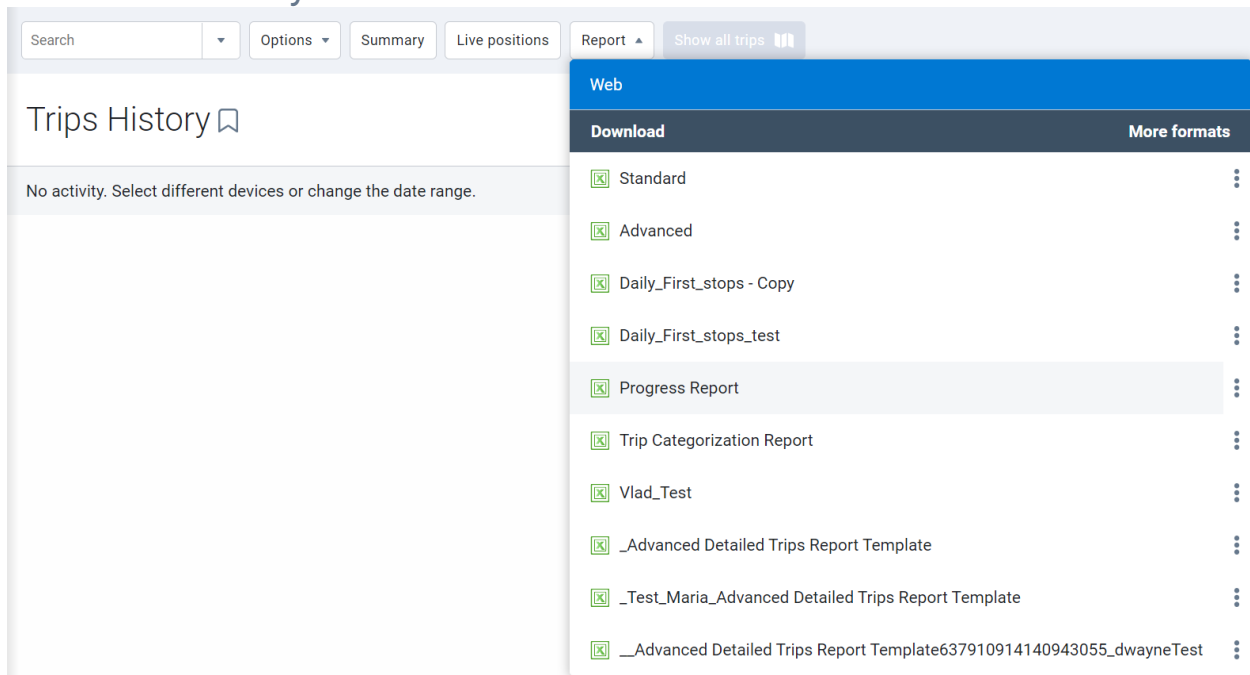
New exclude “stops under” option

We’ve added a new **Exclude stops under** filtering option to the **Additional Report Options** for our **Trips History** page and **Trips**

Detail reports, so you can exclude stops under a particular threshold. This can be useful when a vehicle makes a lot of short trips, such as within a depot. You can now clear this from your view, and see only the longer trips you are interested in.

New Progress report

We've added a new **Progress** report to AFM databases under **Map > Trips History > Report**. This report is intended to streamline downloading start and stop locations and timestamps for assets with extensive trip histories in the given time period. This helps create meaningful reports that filter unnecessary data points to deliver the data you need.



The screenshot shows the AT&T interface for 'Trips History'. At the top, there are navigation buttons: Search, Options, Summary, Live positions, Report, and Show all trips. The 'Trips History' section displays a message: 'No activity. Select different devices or change the date range.' The 'Report' dropdown menu is open, showing a list of report options:

- Web
- Download
- More formats
- Standard
- Advanced
- Daily_First_stops - Copy
- Daily_First_stops_test
- Progress Report
- Trip Categorization Report
- Vlad_Test
- _Advanced Detailed Trips Report Template
- _Test_Maria_Advanced Detailed Trips Report Template
- __Advanced Detailed Trips Report Template637910914140943055_dwayneTest

Engine and Maintenance

Maintenance Reminder Rule setup – Day of month selection

To further simplify maintenance reminders, you can now set **Maintenance Reminder rules** to occur on recurring days of the week or month. For example, you can set maintenance reminders for assets in your database to repeat on your preferred day of the week at



a custom interval, such as every fourth Monday, or biweekly on Tuesdays.

Maintenance Reminder Edit New Reminder Show help

1. Conditions 2. Add Assets 3. Notifications

Reminder name:

Maintenance type: Battery + Add new maintenance type

Repeats by: Time Distance Engine Hours

Reminder frequency:

Repeats by time: On specific day

Reminder access: Select groups...

Company group (everyone)

Repeat on Specific Day

Repeat every 1 weeks

Repeat on

S M T W T F S

Cancel Save

Repeat on Specific Day

Repeat every 1 months

Repeat on day of the month 1

- 1
- 2
- 3
- 4
- 5
- 6
- 7
- 8
- 9
- 10**
- 11
- 12
- 13
- 14
- 15
- 16
- 17
- 18
- 19
- 20

Save

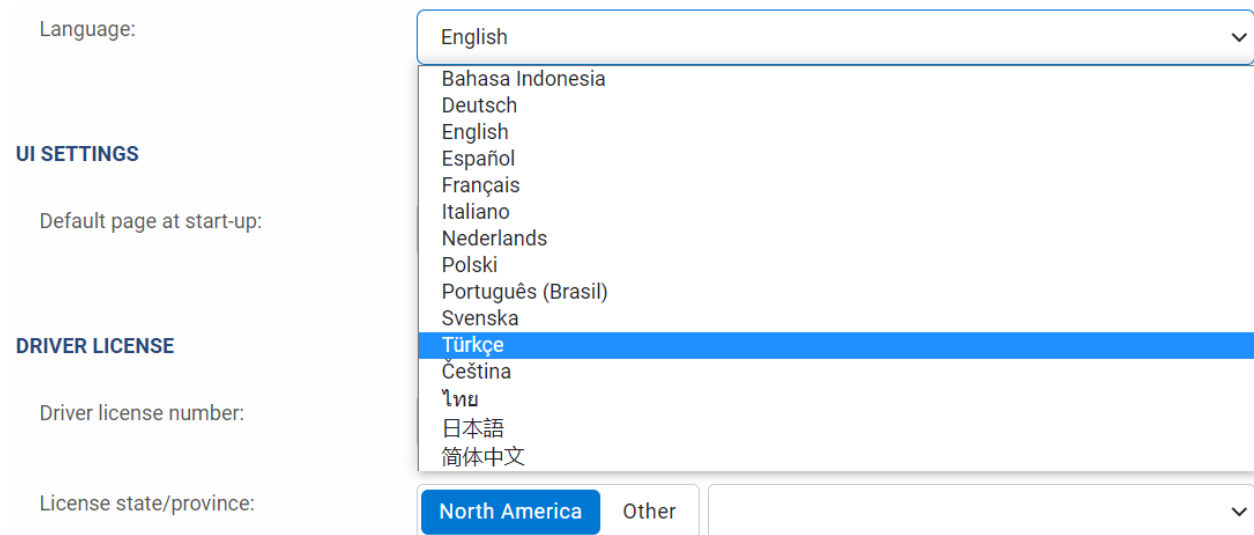
Pagination support for Maintenance Records page

The **Maintenance Records** page now supports pagination to benefit Customers with a lot of maintenance records. Records will load faster, and you can review their data with ease by going through the records page by page.

Localization

Turkish language support

The AFM user interface (UI) is now available in Turkish. You can modify your UI language using the **Language** dropdown in the **Regional Settings** area on the **Options** page.



The screenshot shows the 'Options' page with the 'Language' dropdown menu open. The menu lists various languages, with 'Türkçe' highlighted in blue. Other visible languages include Bahasa Indonesia, Deutsch, English, Español, Français, Italiano, Nederlands, Polski, Português (Brasil), Svenska, Čeština, ไทย, 日本語, and 简体中文. Below the language list, there are buttons for 'North America' and 'Other', and a dropdown arrow.

Language:	English
UI SETTINGS	
Default page at start-up:	
DRIVER LICENSE	
Driver license number:	
License state/province:	North America Other

Built-in Groups

Support for Internal Combustion Engine fuel types

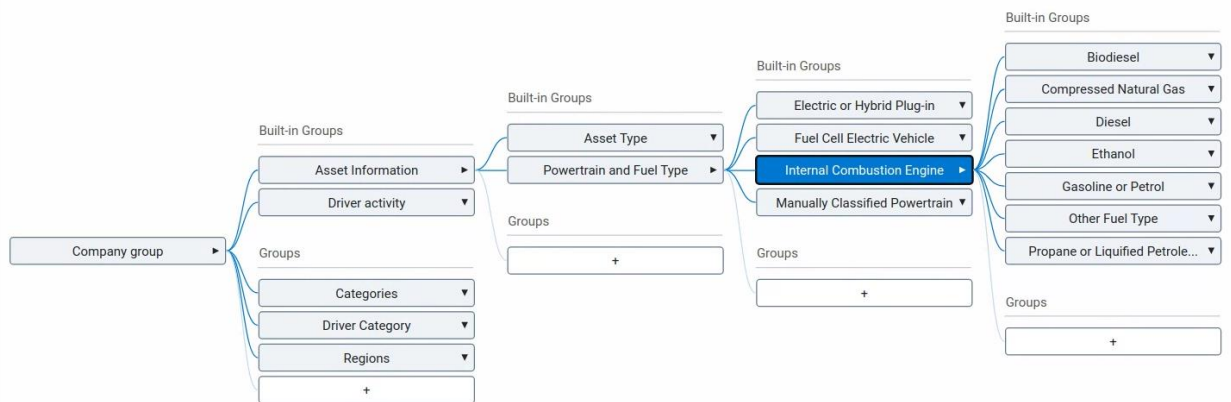
We've added a new built-in group structure that automatically classifies Internal Combustion Engine (ICE) vehicles based on their unique fuel types. AFM now reviews the fuel type signal communicated from the vehicle based on its engine diagnostics (if available), and automatically enters the respective asset into one of



these built-in groups: **Gasoline, Diesel, Compressed Natural Gas, or Propane/Liquified Petroleum Gas.**

In addition to these automatically assigned groups, there are three additional groups that do not have automatic group assignments: **Biodiesel, Ethanol, and Other Fuel Type.** Vehicles can be manually classified into any of these groups at any time.

Groups Tree



If an asset is manually assigned to any of these groups, that asset will be tagged under the **Manually Classified Powertrain** group. Once an asset is manually classified, the **Manually Classified Powertrain** group must be removed in order for the asset to be automatically classified again. If you are removing the **Manually Classified Powertrain** group to re-enable automatic classification, we recommend removing any existing powertrain or fuel type groups for the asset at the same time.

An asset can be part of multiple groups if it is manually classified. When an asset is automatically classified, however, it may only be part of one built-in group. The exception to this rule is any asset that is classified as a Plug-in Hybrid vehicle, in which case it may be classified as both Plug-in Hybrid Vehicle along with a Gasoline or Diesel classification.



Please note that the added support for ICE fuel types is an extension to the feature **Electric Vehicle Powertrain and Fuel Type Groups** announced in What's New in AFM 8.0. All other details regarding automated Electric Vehicle (EV) powertrain assignment remain the same.

AFM database and AFM Drive SDK and Add-in updates

AFM Add-ins

Custom security identifiers for Add-ins

Custom security identifiers for AFM Add-ins are now available. Identifiers can be defined in the configuration.json file of Add-ins, which will then add them to the list of permissions available when editing clearances. These definitions can support multiple languages.

Add-In ✕

Configuration Files

Add-In configuration file:
Drag your ZIP-archived Add-In or
Add-In configuration file here

```
{
  "name": "Sample-AddIn",
  "supportEmail": "support@geotab.com",
  "version": "1.0.0",
  "items": [
    {
      "page": "samplePage",
      "title": "Sample Add-in Panel Name",
      "noView": false,
      "mapScript": {
        "url": "https://"
      }
    }
  ],
  "solutionId": "solutionSolution",
  "isSigned": false,
  "securityIds": [
    {
      "name": "ExampleSecurityIdentifier1",
      "en": "Example Security Identifier 1",
      "fr": "Exemple d'identifiant de sécurité 1",
      "es": "Ejemplo de identificador de seguridad 1"
    },
    {
      "name": "ExampleSecurityIdentifier2",
      "en": "Example Security Identifier 2",
      "fr": "Exemple d'identifiant de sécurité 2",
      "es": "Ejemplo de identificador de seguridad 2"
    }
  ],
  "enableViewSecurityId": true
}
```

Remove OK

Administrator clearance will remain non-editable and have all custom clearances enabled by default. All other default/system clearance levels only allow editing of custom security identifiers, while keeping the system defined default identifiers non-editable.

- Delete messages**
- Display the map and show live tracking**
- Edit notification template**
- Engine status data graph**
- Example Security Identifier 1**
- Example Security Identifier 2**
- Export database**
- Fuel and EV energy usage report**

*** NOTE:** By default, once the `enableViewSecurityId` property in the `configuration.json` for an Add-in is set to `True`, a View “Add-in name” add-in identifier is created that must be enabled for users to be able to

view the Add-in. More granular control needs to be set within the Add-in code for any custom identifiers added to the configuration.json.

 [View "Sample-AddIn" add-in](#)

SDK

- Added new rate limits for API requests for endpoints that do not require authentication.
- Removed the DatabaseExists API that was originally used for database registration purposes. If the database name exists, CreateDatabase throws a RegistrationException.
- Removed the RouteSearchGroups property and replaced it with the ServiceGroups property.
- Added the optional PropertySelector parameter that is used with the Get and GetFeed methods to include or exclude specific properties for entity types requested. Detailed information can be found [here](#).
- Removed the DriverWhiteListContent object and replaced it with the DriverAuthListContent object.
- Improved system group objects to be returned with an English Name field.
- Added RequestPending as an acceptable value of DeviceShareStatus. This value indicates when an outgoing device share request has been created by a user on the source database, and is waiting for confirmation it has been created successfully.
- Added the ResetPassword security identifier.

- Added the EditStockRules security identifier.
- Added the following security identifiers:
 - ManageTachographInspection
 - ViewTachographInspection
 - ManageTachographCompanyCards
 - ViewTachographCompanyCards,
 - TachographDownloadAndUploadFiles
 - ViewTachographRemoteDownloadData
 - ViewTachographDrivingTimeData
 - ViewTachographInfringementData
 - SendColdChainCommand
- Added the ContinuousConnectClearance security identifier.
- Added the ViewShipments and ManageShipments security identifiers.

AFM Release Notes – Version 9.0

Restricted Data Mode

- Added Restricted Data Mode to the Personal Mode feature, allowing drivers and fleet managers to temporarily skip recording GPS coordinates and/or GPS speed on their vehicles. When enabled, location features that use GPS are not available.

Rules

- Added ability to review possible collisions that describe relevant data points on the graph, a ten-second window before and after the collision event, and an adjusted trip history graph on the Exceptions page.
- Added an Include dismissed events toggle to include or exclude dismissed events on the Exceptions page.
- Updated the Idling stock rule's conditions to raise or lower the default value, or add power take-off (PTO) usage into the rule.

Reports

- Added the option to include or exclude dismissed events using the Include dismissed events toggle for the Exceptions Detail, Exceptions Summary, and Risk Management reports.
- Added support for Malaysia ringgit (MYR) and Philippine peso (PHP) currencies on the Maintenance Records page.

Map

- Added the Shared Asset Location feature to display assets' last known latitude and longitude location.
- Added a Status filter to filter assets based on whether they are driving, stopped, or not communicating.
- Moved the Zones, Import Zones, Zone Visits, and Zone Types pages under Maps > Zones.
- Updated the Map Views feature to save related Map settings and added Map view buttons to recall saved Map Views.
- Moved Zoom controls and My Locations buttons to the top-right of the Map.

- The following vehicle icon improvements are made to the Map:
 - Updated asset icons for assets that are driving, stopped, stopped inside zones, and charging, and for assets with active exceptions.
 - Updated icons displayed on the Map legend.
 - Updated the asset cluster icon.
 - Hover over circular icons to view a breakdown of the number of assets in each state.
- Added a new Groups Filter to filter which assets display on the Map according to the selected Groups. Assets are displayed with the color of the group the asset is associated with (Feature Preview).

Trips History

- Added Trip categorization columns to the Trips History page. All trips are shown by default and can be filtered by a specific category.
- Removed the Trip Replay feature from Feature Preview and new replay speed options are available.
- Updated the Include archived (historical) data display option to be set to Off by default.
- Improved a number of errors that prevented the Trip Categorization report from successfully generating. These are also added to versions 6.0 and 7.0.
- Improved the Trips Summary report to include assets that have not reported any distance for a specified time frame.

- Added Exclude stops under filter to exclude stops under a particular threshold. Clear this from your view to see longer trips only.
- Added a new Progress report under Map > Trip History > Report to help download Start/Stop locations with timestamps.

Engine and Maintenance

- Added the ability for Maintenance Reminder Rules to select specific days of the week or day of the month, as well as how many weeks or months this rule should reoccur on.
- Updated the Maintenance Records to support pagination for Customers with a lot of maintenance records.

Localization

- Added the Turkish language option to the Fleet Management Application user interface.

Built-in Groups

- Added built-in group structure to classify Internal Combustion Engine (ICE) vehicles based on the fuel types.

Fleet Management Application SDK and Add-ins

- Added custom security identifiers for Fleet Management Application Add-ins.
- Added a new rate limit for API requests for endpoints that do not require authentication.
- Removed the DatabaseExists parameter that was originally used for database registration purposes. If the database name exists, CreateDatabase throws a RegistrationException.



- Removed the RouteSearchGroups property and replaced it with the ServiceGroups property.
- Added the optional PropertySelector parameter that is used with the Get and GetFeed methods to include or exclude specific properties for entity types requested.
- Removed the DriverWhiteListContent object and replaced it with the DriverAuthListContent object.
- Improved system group objects to be returned with an English Name field.
- Added RequestPending as an acceptable value of DeviceShareStatus. This value indicates when an outgoing device share request has been created by a user on the source database, and is waiting for confirmation it has been created successfully.
- Added the IncludeDismissedEvents property. When enabled, this includes dismissed exception events.
- Added the ResetPassword security identifier.
- Added the EditStockRules clearance.
- Added the following clearances:
 - ManageTachographInspection
 - ViewTachographInspection
 - ManageTachographCompanyCards
 - ViewTachographCompanyCards,
 - TachographDownloadAndUploadFiles



- ViewTachographRemoteDownloadData
- ViewTachographDrivingTimeData
- ViewTachographInfringementData
- SendColdChainCommand
- Added the ContinuousConnectClearance security identifier.
- Added the ViewShipments and ManageShipments security identifiers.