

AT&T Fleet Management platform update release note

What's New in AT&T Fleet Management platform – 2103 Release

Published November 2021

General

Odometer and distance calculation improvements

Odometer is used throughout your AT&T Fleet Management database in Trips History, Assets, Rules, Reporting and more. AT&T Fleet Management has overhauled how odometer and distance is calculated and stored with the end goal of improving the speed and accuracy of our odometer reporting everywhere in the application, including within HOS (Hours of Service). These changes will start rolling out in this release and continue in subsequent releases.

Active Insights now available to all users (Feature Preview)

For fleet managers with limited resources, **Active Insights** utilizes AT&T Fleet Management's rich data resources to provide clear and compelling insights into your business. Using our data analysis and AI models, Active Insights helps turn your data into measurable cost savings, with recommendations on what you can do to optimize your fleet. Visit the Active Insights page to start your data story today! In this release, we are introducing two powerful Insights, with more to come!

- **Intelligent Zones** — Automatically creates and manages new zones in AT&T Fleet Management. This Insight uses vehicle stop history to locate and recommend new zones. Users of AT&T Fleet Management can save time by importing recommended zones instead of creating them manually.
- **Electrical System Rating (ESR)** — Measures the health of your vehicle's electrical system to provide an Electrical System Rating (ESR) on a scale from 0 to 100. ESR scale is based on four status categories: Good, Fair, Caution, and Poor. Caution indicates that maintenance should be scheduled for the vehicle; while Poor indicates that the battery is likely to fail. The ESR score is calculated daily for every vehicle in the fleet and can be viewed on the Engine Diagnostics page.

For more information on how ESR is calculated, and the criteria involved, see our [Electrical Systems Rating Summary](#) presentation.

Groups filter ▾ All groups selected

Active Insights

New Zones
240 zones

154 new insights added Jul/05/2021

Automatically identifying areas where your fleet vehicles are regularly stopping, and recommending zones to you. Save administrators manual zone creation time and keep better track of where your fleets are spending their time.

[View insights](#)

New Electrical System Issues

6 new issues added Jul/14/2021

Automatically identifying vehicle battery health issues. Battery failures lead to vehicle breakdowns, lost time, productivity, and unmet SLAs for customers.

[View issues](#)

Extendable Services now out of Feature Preview

Extendable Services is out of Feature Preview and now available to all users! Extendable Services is a secured data sharing technology that allows users to collaborate with trusted business partners by extending their telematics data to other AT&T Fleet Management users. For example, users can extend safety and performance-driven data to insurance providers to save on coverage or extend engine diagnostic data with maintenance providers to save on repairs. Extendable Services starts with a transaction between two AT&T Fleet Management users; a user from a Primary Database who makes a request to extend telematics services to a user from a Target Database, who accepts or rejects the request based on the needs of their business.

To learn more about Extendable Services, please refer to our [User Guide](#).

Save Remove Cancel View on map + More details Retrieve VIN Personal Mode Engine Data Profile

Vehicle Edit MyTruck Show Help

Device Driver feedback Groups Rate plan **Extended services**

To enable a secondary subscription to this device, please enter the name of the database you would like to share the data with, and the subscription plan (data access level) that database will have access to.
 Please Note: Messages sent within your database using the Vehicle Messages feature are visible on the Messages page, and to all databases that you have extended telematics services to. You must ensure that you have all necessary consents and permissions from message recipients prior to extending your telematics services. In addition, all databases receiving your extended services also receive vehicle diagnostics that are transmitted by connected IOXs on all rate plans.

Add another service

Service Status	Plan	Database	Service Date	Actions
New	Base	kvbeta	02/16/21 12:09:22	<input checked="" type="checkbox"/>

In-App help

In-App Help is a self-serve, self-supporting help and onboarding center, where users can view how-to videos, search [Knowledge Base](#) articles, and follow guided tutorials — all without leaving the application. Need help adding new assets or using compliance tools? In-App Help uses live features to walk you through each step. Growing your business? Let In-App Help onboard your Customers while you manage your fleet. At AT&T Fleet Management, empowering our users is what we do. So go ahead, try it out, and tell us what you think. We're excited, and we hope you are too.

Groups filter All groups selected johnsmith@abcco.com abcd_fleet_company

myGEOTAB™

Name, VIN, or serial number Show Sort by: Name Add Links Report

Vehicles & Assets Showing 8 assets Select none Columns

Name	Current driver	VIN	License plate	Serial number
		1ABRW2H33HH120000	ABCD123	G92121100000
		4JHRW2H93HH120000	CDEF123	G9C5211B0000
		2HKRW2H93HH120000	AA1000	G97221180000
		YV1902FH6D2170000	DEFG123	G9C521020000
		AB1902FH6D2170000	FGHI123	G75620E10000
		3VV0B7AX7JM010000	GHJK123	G9CC20FD0000
Test Asset 6 West	None	3VV0B7AX7JM010000	ABFG123	G90521180000
Test Asset 7 North	None	1B3HB48B18D712548	Unknown	G9C92105F813

In-App Help

Search tutorials and community articles using keywords

- How to add vehicles and assets
- How to view my assets list
- How to add multiple vehicles and assets
- How to set up an HOS vehicle
- How to bulk edit assets
- How to filter groups

Dashboard & Analytics

Map

Vehicles & Assets

Activity

Engine & Maintenance

Zones & Messages

Rules & Groups

Administration

Marketplace

Collapse

New MyDemo Database

Introducing **MyDemo**! MyDemo is an on-demand demo database for Partners and Integrators with 24/7 access, and real-time data. Partners can use MyDemo to prospect for customers and build opportunities; while Integrators can use MyDemo to test new solutions and integrate their services. Setup is easy, just visit the [MyPreview Registration page](#), choose a dataset, and set an expiry period. When the expiry period is reached, the database is deleted automatically. Need a new one? Simply return to the Registration page and start again!

Registration Show Help

WELCOME

Getting started is easy.

To register a new account, please complete the information below. When your account is registered, we will send you an email containing the next steps.

Fields marked with an asterisk (*) are required.

DATABASE INFORMATION

Database Purpose: Business **Demo**

Database Expires After: 24 hours ▼

PLEASE NOTE: This database will be completely deleted after the selected time period has expired. The time period will be to expire from the time the database is created

Demo Vocation: * Hub and Spoke ▼

Demo Vehicle Type: * Passenger ▼

Demo Location: * USA ▼

Las Vegas

Demo Fleet Size: * 50 Vehicles ▼

COMPANY INFORMATION

Company Name: *

Short Name: * Demo_

Are you a government organization? * Yes No

Pagination for Assets and Zones

We've removed the maximum limit for fleets with over 500 assets, users, or zones. Users can now view all entities without limits by navigating through pages using the forward or back arrows. We still recommend that you use Groups to manage your fleet and filter your lists to display preferred assets.

Vehicles & Assets Showing 1 - 500 of 1888 ← 1 2 3 4 → Select none ▼ Columns ▼

Name	VIN	Current driver	License plate	Odometer	Engine hours	Serial n
Dispatch 123 Company group	Unknown	None	CLKY007	0 mi	0 h	G9BA21
Dispatch 234 Company group	2HGFG12367H003804	None	BAHN461	79856 mi	50 h	G9F121
Dispatch 345 InsuranceGroup	Unknown	John Smith (jsmith123)	ABCD1003	2830 mi	60 h	G4A01D

Welcome message for new users

New users to AT&T Fleet Management will now see a special message about our mission, and how we can help you make the most out of your AT&T Fleet Management experience. Stick around after the message for an interactive tour on how to find what you're looking for using our easy navigation features.



Thank you for choosing our product to help you manage your fleet! To start customizing your solution, please follow our [interactive tutorials](#) and search for [community articles](#) in the [Getting Started & Help](#) main menu.

Let's spend the next few minutes learning how to navigate the Portal.
Just click the **Guide Me** button to begin.



Don't show me again

Vehicles & Assets

New Asset Edit page (Feature preview)

For busy users looking for faster ways to manage their assets, we've updated our Asset Edit page to provide a more compact and complete view of your assets. By consolidating important information into one page, navigation is reduced, so you can take action faster.

The tabs on the Asset Edit page include the following information:

- **Asset:** Includes a quick summary of the asset, the current driver, how it's being used, its current location, groups, fuel consumption and more.
- **Health:** Reports on the health of the asset, including active faults, maintenance history, upcoming events, inspection logs and more.

- **Audio feedback:** Previously called Driver feedback, Audio feedback now includes GOTALK settings, and other usability improvements that better display what options are available.
 - **Driver Identification Reminder Duration: Available on GO9 devices and newer. The duration of the Driver Identification Reminder can be set under the Audio Feedback tab.**
- **Extendable services** and **Rate plan:** No changes.
- **Settings:** Groups settings under one tab versus multiple tabs and **More** buttons.

Asset Edit Dispatch 123 Show Help

Asset Health Audio feedback Data streams Rate plan Settings

ASSET INFORMATION

Name/Description:

Device type: Version 9

Current driver: johnsmith [Assign driver](#)

Groups: Clear selection

Gotham City Nealswagen MVP Group

Heavy Duty

Messaging status groups: Clear selection

Available for Dispatch

Vehicle ID number:

License plate:

State/province:

Odometer: mi

Current engine hours: hours minutes

Serial number:

Unplug device Replace with new device

Asset Usage Last 7 days

● Stopped: 0h 37min ● Driving: 0h 23min ● Idling: 0h 37min

Location on 7/20/2021 at 6:28:28 pm

Map Satellite

2641 Windmill Pkwy, Henderson, NV 89074, USA
Zone: None
Current exceptions: None

View Trip History

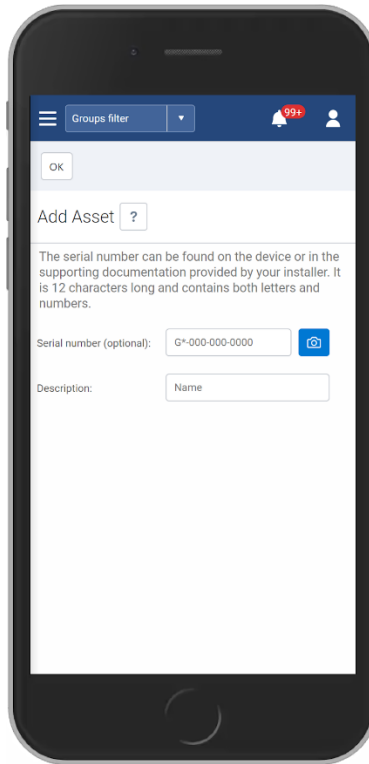
24% full 21.8 MPG (US) Fuel Economy Last 30 days

Exceptions Last 7 days

Unauthorized Device Removal - 1 times
Idling - 1 times

Barcode scanning for faster entry of serial number

You can now use the camera on your mobile phone to scan the serial number on your GO device.



Rules & Exceptions

OEM devices

To better capture OEM acceleration data, we have improved our OEM data collection and processing capabilities to more accurately reflect OEM acceleration events.

New Exceptions page (Feature Preview)

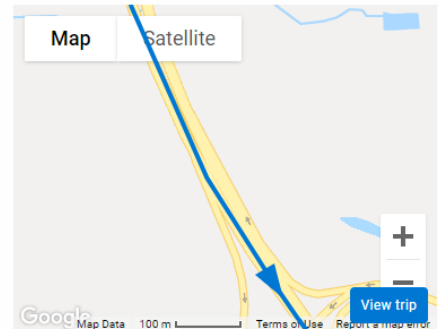
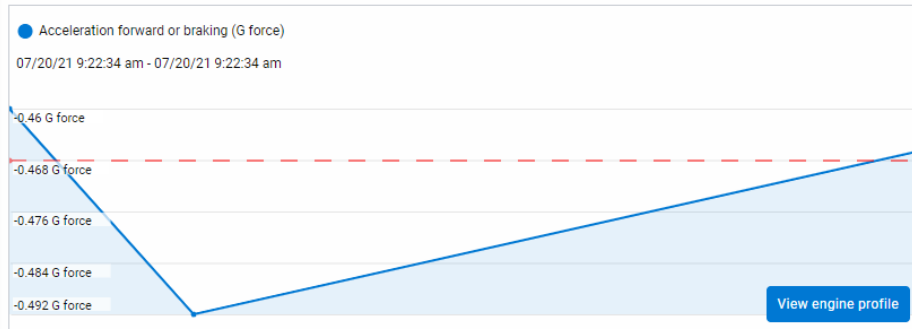
We've added a new **Exceptions** page with flexible tools and visualizations designed to provide meaningful insights into your business. Click an event to view details such as location, duration and driver contact info. Additional features such as event status, and the ability to include images, PDF files, and annotations will be introduced in a future release.

← Back

Harsh Braking Dispatch 123 – 07/20/21 9:22 am

Exception overview

SPEED DETAILS



▶ 00:00 / 00:00

EVENT DETAILS

Exception: [Harsh Braking](#)

Vehicle: [Ford Fusion Energi 2019 \(FP\)](#)

Driver: No driver

Contact: Not available

Date: 07/20/21

Time: 9:22:34 am

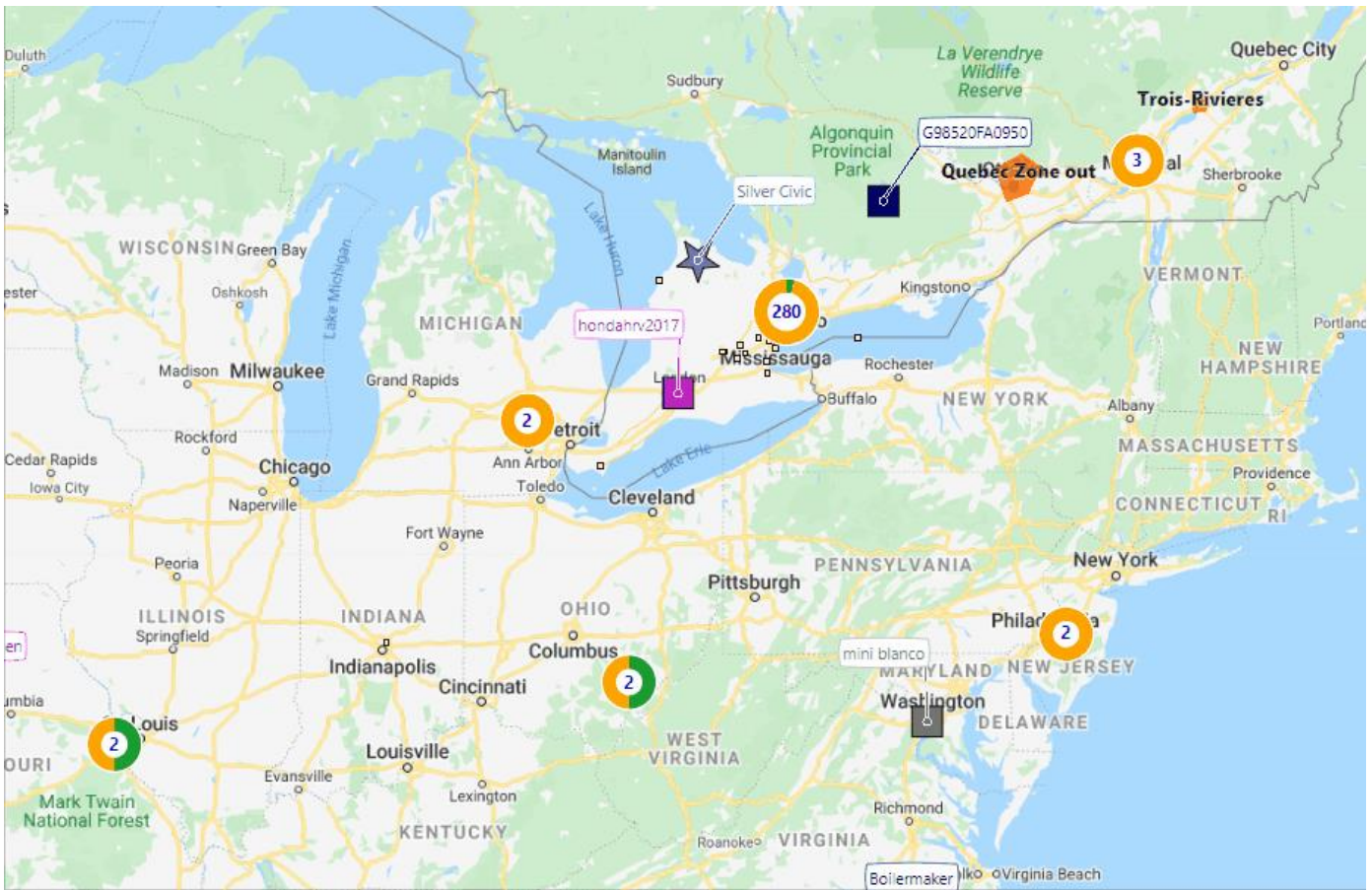
Location: 9755 Highbury Ave N, London, ON N6M, Canada

Duration: 00:00:00.250

Map

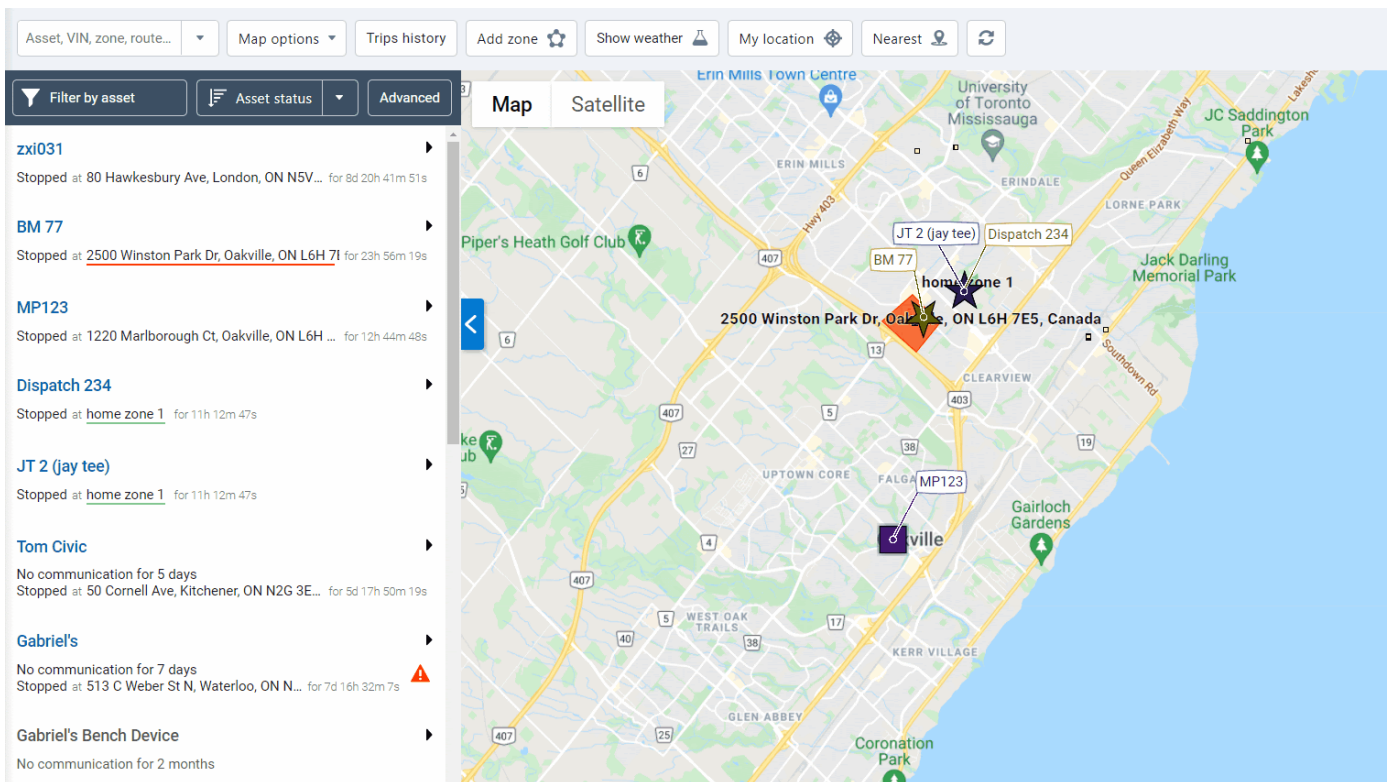
Clustered map view

Clustered Map view is out of Feature Preview now available for fleets of all sizes! While in preview, we set limits of 500 assets or more. Due to popular demand, fleets of all sizes can now enjoy additional insights using the Clustered Map view.



Nearest assets

AT&T Fleet Management now uses real-time traffic data to calculate the distance between a selected location and the assets nearest to that location. **Nearest assets** technology uses a routing service to locate up to five of the closest assets within a 50-mile radius, then calculates the distance and the estimated time of arrival based on live road conditions. Users will notice a significant improvement over previous functionality, which calculated nearest assets using simple straight-line distance.



Area Activity feature

The **Area Activity** feature is out of Feature Preview and now available by default. Use the Area Activity feature to create a timeline of activity including the locations you have visited, and the routes you have travelled. Just zoom in to an area, click a location, select **Area Activity**, and enter a date and time. Use the Area Activity feature to investigate pick-up or delivery disputes, fleet activity over time, or simply to track day-to-day operations.

*** NOTE:** You may need to adjust your zoom level before the Area Activity feature is visible. You can search for a period of up to 72 hours from a particular date and time.

Maintenance

Maintenance reminders now available to all users

At AT&T Fleet Management, we work hard to create simple and efficient tools that make sense for your business, and your feedback is an essential part of that process. Over the past year, we have heard from a lot of you as we worked to improve our maintenance features. Now, with your endorsement, Maintenance Reminders is out of Feature Preview and available to all users by default.

Notable highlights include:

- Improved user experience.
- Addition of costs and multi-currency support.
- Support for ad-hoc maintenance logs.

- Bulk import of previous maintenance logs.
- Automatic notifications when approaching maintenance due dates.

Save Cancel Remove Show/hide archived (historical) assets

Maintenance Reminder Edit Show Help

1. Conditions 2. Add Assets **3. Notifications**

ADD NOTIFICATIONS

Choose how this maintenance reminder will notify you or others.

Notification type:

Recipient:

Trigger notification: days before due

OR: mi before due

OR: engine hours before due

Cancel Save

NOTIFICATION MESSAGE

The text within the notifications will have the following message, except the words in brackets will be replaced with their corresponding actual values. The message title will be the name of this reminder, and will include the type of maintenance needed.

Coolant Replacement - Medium Vehicles

{Device} will be due for Coolant Replacement in {#} days, {#} mi, or {#} engine hours.

Installation

Revamped Device Installation History page

For faster access to installation details, we have added new filter options to the **Device Installation History** page. Users can now filter on date range, refine results, and show/hide columns.

The **Standard** and **Advanced** Excel reports have also been updated to contain the following options:

- Asset serial number
- Date of installation
- Asset name
- License plate
- VIN
- Make/model
- Service performed
- Installer
- Installation company
- Work reference
- Harness (only in Advanced)
- IOX (only in Advanced)
- Auxiliary port(s)
- Comment or additional harness
- Odometer
- Engine hours
- Last device communication
- Last valid GPS record
- Last valid engine record
- SIM active
- Engine protocol
- Possible issues
- Result comments
- Installation comments

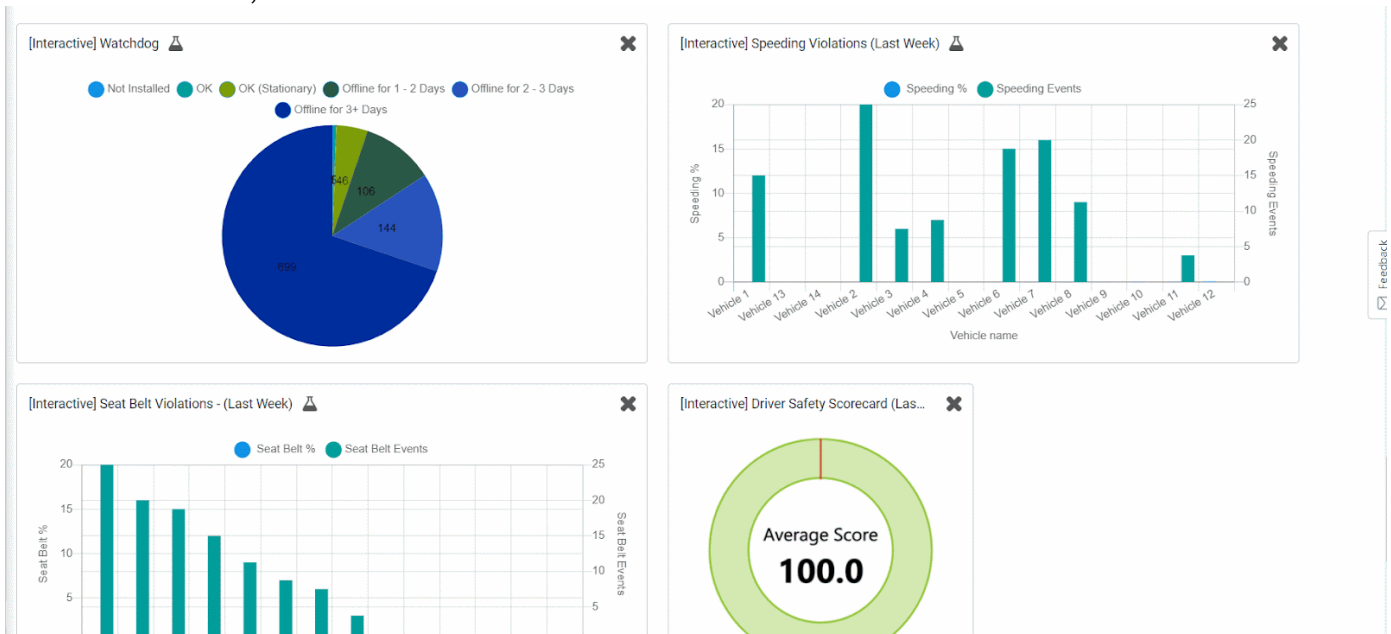
- Installation photo 1 (only in Advanced)
- Installation photo 2 (only in Advanced)
- Installation photo 3 (only in Advanced)
- Installation photo 4 (only in Advanced)

Serial number	Installation Date	Status	Vehicle Name	License plate	VIN	Installer Name
G94F21107012	12:07 pm 05/02/21	● No status	Dispatch 123	AJKA123	1HGBH41JXMN109186	Joe Smith Installer Company
G97C21123950	11:52 am 05/29/21	● No status	Dispatch 234	ABCD123	1FGBH41RXMN209185	Jake Johnson Install Co.
G9D021F8DAC8	9:10 pm 06/15/21	● No status	Dispatch 345	CDE1234	1RFBH41ABMN105126	Jill Charles
G9D8210345AG	1:25 pm 06/17/21	● No status	Dispatch 456	DEF1234	2TDBH41ABMN109256	Tom Hollings Inc.

Reporting

Interactive Charts (Feature Preview)

Interactive Charts lets you visualize, create, and display interactive widgets from Excel reports. Widgets, such as the Watchdog Report, can be displayed on your Dashboard, then actioned in Vehicles & Assets, just a few clicks away. Monitoring the health of your assets is important, and with Interactive Charts, it's now easier than ever.



The report types below will now have a new Interactive Chart option in the settings:


- Device Report
- Exceptions summary

- Trips detail
- Risk management

Groups filter All groups selected ? 99+ johnsmith@abcco.com abc_company

Save Cancel Remove Export Show All Recipients

Report [Interactive] Watchdog Show Help

 Drop file here or click to browse

Report view **Dashboard** Email report

Preview is showing template data only

Add chart to Dashboard: No **Interactive chart** Excel chart

Users who haven't turned on Feature Preview will not be able to see any **Interactive charts** on their dashboards. To make sure all users can view this chart, create a duplicate Excel chart.

Interactive chart settings: (Layout and template settings) Keep previous settings Customize

DISPLAY OPTIONS

Group dashboard viewers: Clear selection

All in: x

Individual dashboard viewers: No users selected


Include me as a dashboard viewer: Yes No

1389 users will see the graphic

REPORT DATA CONFIGURATION

interactive] Watchdog

Not Installed
 OK
 OK (Stationary)
 Offline for 1 - 2 Days
 Offline for 2 - 3 Days
 Offline for 3+ Days



Audit log types for Dashboard and Email Reports

To prevent users from having to add manual filters to Excel reporting output, we have added **Audit type** filters on scheduled Email and Dashboard Reports. For added usability, this also reduces file size.

Save
Cancel
Export
View report
Show All Recipients

Report Advanced Audit Log Show Help

Report view
Dashboard
Email report

Include me as a dashboard viewer: Yes No

Only one user will see the graphic

REPORT DATA CONFIGURATION

Date range: Previous hour
Today
Yesterday
Previous 24 hours
Previous 7 days
This week
Last week

Refresh period: Daily

Next run: 04/30/21 10:29 am

ADDITIONAL REPORT OPTIONS

Audit types

- Accept support services
- Add Asset Inspection log
- Add Excel report
- Add HOS log
- Add User HOS Ruleset
- Add Wi-Fi
- Add archived (historical) device

Improved engine status reporting

As promised in our 2102 release blog, we continue to customize our Engine Measurements feature, with new reporting options for regional units of measurements. Based on user profile settings, Excel reporting output will feature data in the regional units selected, no conversion required!

New custom column for Fuel and EV Energy Usage Report

We have added a new custom EngineStatusStatisticsGpsDistance column to the Fuel and EV Energy Usage report. To add the new column, go into the data sheet in the Excel report, and add the column header: "EngineStatusStatisticsGpsDistance". The EngineStatusStatisticsGpsDistance column will now populate the total GPS distance of all vehicles in the fleet.

Other

- For databases on the Brazilian platform, a new EULA is now available
- Changed sender name for automated emails from noreply@geotab.com to AT&T Fleet Management
- Renamed Links button to Installations on Vehicles & Assets page
- Enhanced audit log capability to include both original values, and new values set by drivers when editing NFC fields
- Users must select a jurisdiction when registering a new database
- Updated state of charge notification token value to be a whole number without decimals
- Added AiModel Source to the Diagnostics page
- Added LEVC (London Electric Vehicle Company) OEM faults to AT&T Fleet Management
- Added support for Shapefiles in Public Works Route Completions. The Shapefile option replaces the Excel option in Route Import, as the default

AT&T Fleet Management/Drive SDK and Add-In updates

Add/Set<FuelTransaction

Fuel transactions must be unique when comparing all fields (excluding source Data) against existing transactions.

CompanyDetails

Added "jurisdiction" property.

CreateDatabase

The CreateDatabase API now requires user-selected jurisdiction. The jurisdiction is the place of residency for Customer data, maintenance hours, and other information (e.g. U.S., EU). This was previously inferred from the selected time zone. To maintain backwards compatibility, time zone can still be used to infer jurisdiction. However, all users are encouraged to provide a jurisdiction as part of the CompanyDetails provided to the CreateDatabase API.

CustomVehicleDevice

Added "fuelTankCapacity" property.

DiagnosticType

Added "LevcFault".

takePicture

The Drive App Add-in can now access the device camera to take a photo. Users can also upload photos from the mobile device.

DriverRegulation

Added "CurrentDutyStatus" representing the latest "DutyStatusLogType" affecting availability or violations.

DutyStatusViolationType

Added "EwdRest", "EwdWork", and "EwdWorkExemption" (formerly "Work" and "WorkExemption").

DVIRLogSearch

Added "LogTypes" property for searching by list of DVIRLogType.

ExceptionEvent

Exception events can be deleted when new data arrives from a device that, when evaluated against the same rule conditions, invalidates the previous state of the exception. For example, a speeding exception is generated for a street with a 40mph speed limit beside a highway. As more GPS data arrives, it becomes clear the vehicle is on the highway, not the service road, so the exception is invalidated. This is a problem for users who continuously request ExceptionEvent data because they are unaware when an exception is invalidated and deleted at a later date.

To resolve this issue, two new properties have been added to ExceptionEvent: "lastModifiedDate" and "state". These properties determine if the exception event is invalidated instead of deleted. This means that when a new GetFeed request is made, the user sees the updated record and can adjust their records accordingly. Invalidated exceptions will no longer be removed immediately.

*** NOTE:** This feature is not enabled by default. You must pass the search parameter "includeInvalidated" in the request to Get or GetFeed to return invalidated exception events. The "state" of these exceptions will be "Invalid".

ExceptionEventSearch

Added "includeInvalidated" property.

ExceptionEventState

New object representing the state of the exception event. Possible states are "Valid" and "Invalid".

Generator Add-in

Generator add-in updated to mock drive add-in camera API features.

Group

Group objects in some instances had "color" and "children" properties partially populated when nested in another object (ex device.groups). This is fixed, so they are no longer populated when groups are nested in group linked entities.

HosRuleSet

Added "CaliforniaPropertyShortHaul" and "CaliforniaPropertyShortHaulWithRest" to HosRuleSet.

Jurisdiction

New enumeration representing the Jurisdiction of a database.

MediaType

Added "Application" media file type. This is to support PDF file types in MediaFiles.

RadioDownloader, RadioData and related objects are removed

All Radio Downloader related objects are removed as AT&T Fleet Management deprecates all RF functionality.

SecurityIdentifier

- Added "ViewDeviceDataPrivacyChangeData" and "EditDeviceDataPrivacyChangeData"
- Added "ViewSharedDevice"
- Added "AdministerPropertySet", "ViewPropertySet", "AdministerProperty", and "ViewProperty"
- Added "ViewActiveInsights"
- Added "IgnoreHOSLogs"
- Added "ViewShareableLink", "CreateShareableLink", and "DeleteShareableLink"

TripSearch

Added "SearchArea" property to allow searching for trips within a rectangular BoundingBox geographic area.

To learn more about AT&T Fleet Management, visit att.com/fleetmanagement.