

AT&T Fleet Management platform update release note

What's New in AT&T Fleet Management platform – 2102 Release

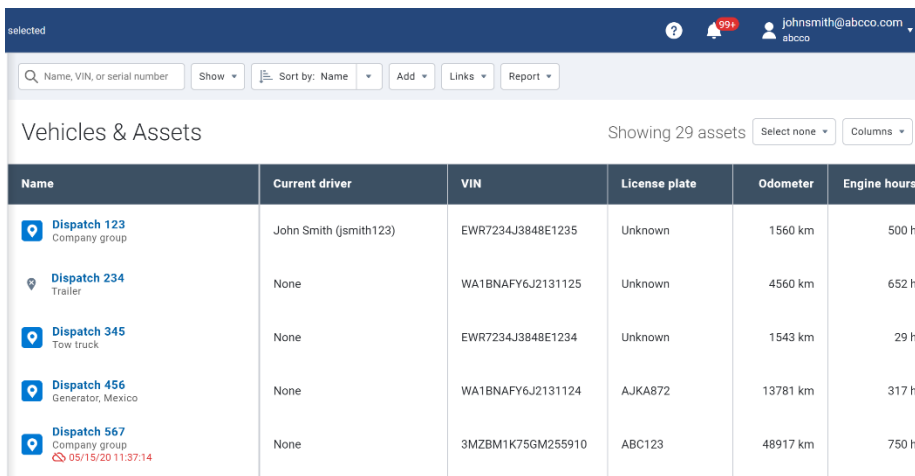
Published on August 2021

New AT&T Fleet Management design

New and improved AT&T Fleet Management redesign

If you didn't have Feature Preview enabled, AT&T Fleet Management might look a little different for this release. As announced in our 2101 roll out, our Product and Design teams have been working hard to maximize functionality, encourage exploration, and simplify your experience with a new and improved look. We're keeping it simple with clean text, added contrast, and neatly arranged elements. Navigation is more intuitive, and user actions more distinct. Customers like it so much we're taking it out of Feature Preview! For this release, the new design will be applied by default.

* NOTE: To get the most out of the new design, be sure to update any documentation, screenshots or training material as soon as possible.



The screenshot shows a user interface for 'Vehicles & Assets'. At the top, there is a search bar with the text 'Name, VIN, or serial number' and buttons for 'Show', 'Sort by: Name', 'Add', 'Links', and 'Report'. Below the search bar, it says 'Showing 29 assets' with 'Select none' and 'Columns' dropdown menus. The main content is a table with the following columns: Name, Current driver, VIN, License plate, Odometer, and Engine hours. The table lists five assets:

Name	Current driver	VIN	License plate	Odometer	Engine hours
Dispatch 123 Company group	John Smith (jsmith123)	EWR7234J3848E1235	Unknown	1560 km	500 h
Dispatch 234 Trailer	None	WA1BNAFY6J2131125	Unknown	4560 km	652 h
Dispatch 345 Tow truck	None	EWR7234J3848E1234	Unknown	1543 km	29 h
Dispatch 456 Generator, Mexico	None	WA1BNAFY6J2131124	AJKA872	13781 km	317 h
Dispatch 567 Company group 05/15/20 11:37:14	None	3MZBM1K75GM255910	ABC123	48917 km	750 h

Live chat

AT&T Fleet Management now supports Live Chat

Need help fast? Ask questions and get answers with our new Live Chat feature, now available under Getting Started & Help > Support > Live chat with Agent. We're keeping it personal by starting a conversation that helps us get to know our users — and you, to get to know our products. Simply tell us who you are, what you need help with, and our Agents are standing by to help you stay connected and stay on the road.

* NOTE: To use the Live Chat feature, your username must be an email address.

Vehicles & Assets Showing 4 assets Select none Color

Name	Serial number	VIN	License plate	Odometer	Current driver	Comments
Demo Vehicle 1 Heavy duty	G98E2CFA0B	Unknown	Unknown	0 km	None	
Demo Vehicle 2 Passenger transport <small>03/03/21 17:01:12</small>	G9982CFA12	Unknown	Unknown	0 km	None	
Demo Vehicle 3 Pick up	G7652E07CA	Unknown	Unknown	0 km	None	
Demo Vehicle 4 Vehicles	G9982CFAAD	TG1RA6559HJ200	Unknown	47095 km	None	

Thanicha
Replied just now
Great! Support! My name is Thanicha.

How are you today ?

Doing well, thanks, I am just testing out the new live chat functionality

working great!

Just now

Type something...

Dashboard

New and improved built-in dashboard reports

We've removed our current suite of built-in reports, and replaced them with new, contemporary reports that make sense for your business. The following reports are enabled by default, immediately after registering a new database.

- Idling violations
- Watchdog
- Fleet utilization
- Fleet distance trend

Added 17 brand-new reports

We have added 17 brand new built-in reports to each Customer database:

- Active engine faults
- Aggressive driving
- Idling violations
- Possible collisions
- Average fuel economy
- Driver safety scorecard
- Speeding violations
- Seat belt violations
- Max speed
- Fleet distance trend
- Asset utilization
- Fleet utilization
- ELD unidentified driver logs
- ELD diagnostics and malfunctions
- ELD unverified logs
- HOS violation breakdown

- Unrepaired defects

* NOTE: Except for the Idling violations, Watchdog, Fleet Utilization, Fleet Distance Trend, and all other reports are not enabled by default. Users can navigate to the Built-in reports section on the Report Setup page to set up these and other reports. Options include Dashboard and Email reports as well.

Updated report templates

We've updated all 65+ of our built-in reports to better showcase our system capabilities, and to improve layout and visual appeal.

**Device	**Date	**Group	**Time from Office
Template Vehicle 1	Dec 01, 2009	Template Group 1	24h, 0m

**From	Date
**From	Dec 01, 2009
**To	Dec 08, 2009
Days	8
**Time Zone	America/New_York
**Distance Unit	km

Dashboard wizard (Feature Preview)

Whether you're a new Customer looking to hit the ground running, or an existing Customer looking to improve fleet operations, our new Dashboard wizard can help you get started in three easy steps. Simply choose your pillar of interest, select your reports, and choose your audience. We'll do the rest. Rules are applied automatically and can be changed any time by going to Administration > Report Setup > Dashboard.

* NOTE: Only users with Company Group access, and the appropriate permissions to set up reports can view the Dashboard wizard.

Compliance

- ELD unidentified logs
- HOS violation breakdown
- ELD unidentified driver logs
- Unrepaired defects
- ELD diagnostics and malfunctions

Optimization & Productivity

- Active engine faults
- Average fuel economy
- Asset utilization

Safety

- Aggressive driving
- Possible collisions
- Driver safety scorecard
- Speeding violations
- Seat belt violations
- Max speed

Reporting

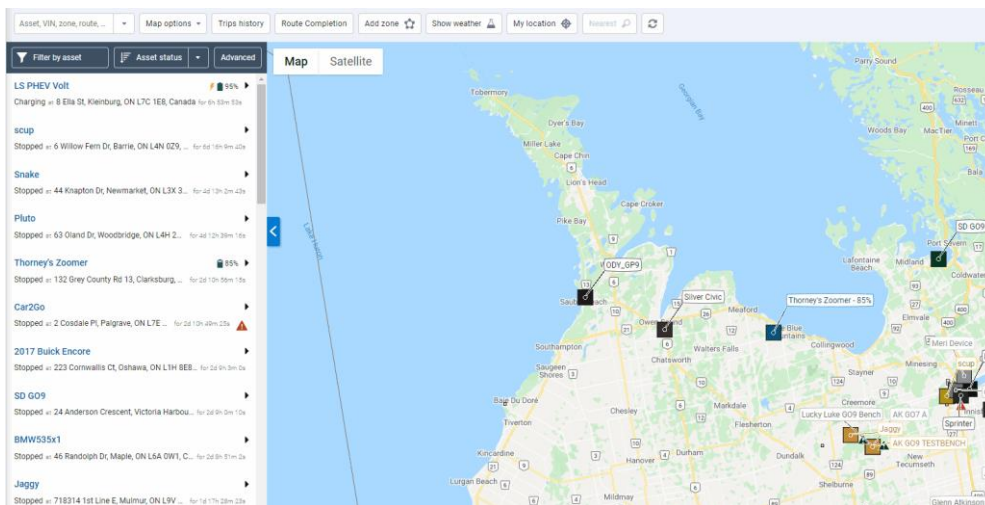
Faster reports, ready when you need them

To support large fleets and date ranges, we've added functionality to improve the performance of our Risk Management and Exceptions Summary reports. Faster run time means faster access to information.

Map

Live Map advanced view (Feature preview)

Fleet owners can now view asset details while tracking their position on the Live Map. This is helpful for fleets who want to monitor the current status of their assets, e.g. temperature, loaded state, fuel level, and more.

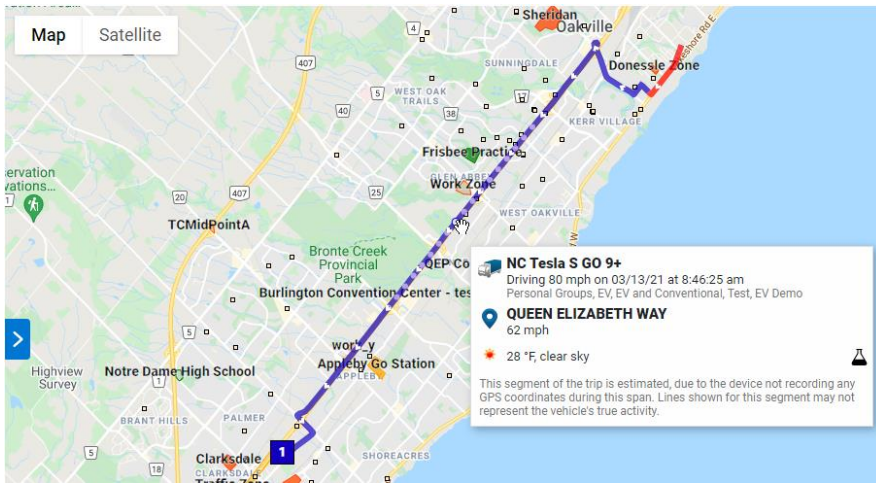


Snap to road

To better visualize trips on the Map, we've integrated our routing service with tools to support all types of devices. Fleets with telematics devices that record less frequently will find this feature helpful as trip data will no longer interfere with landmarks on the Map.

Always see the latest and current trip in progress

On the Map, you can now view the vehicles' previous trip as well as the vehicles' current position during a trip in progress at the same time. For example, a fleet involved with winter operations can see the previous trip activity of the snowplows as well as the current location of the snowplow at the same time.

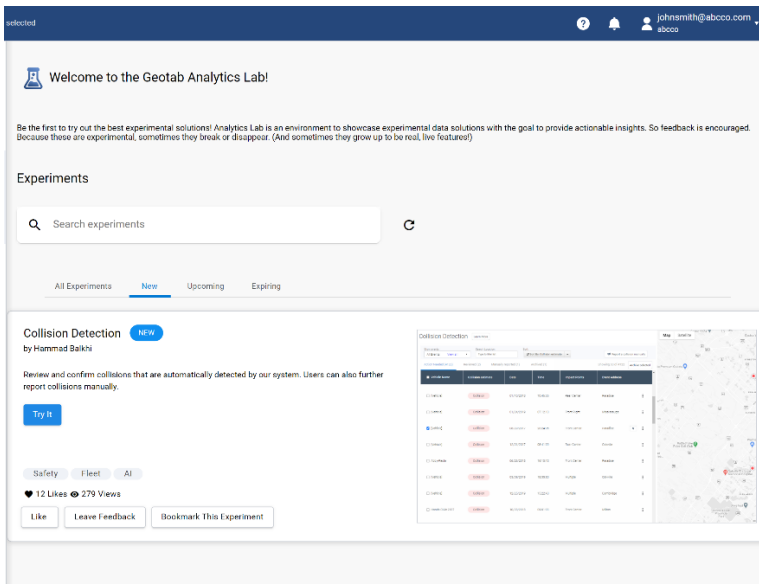


Analytics Lab

Analytics lab is now available for all Customers!

In our last release, we introduced the Marketplace Analytics Lab Add-In, a suite of experimental Apps designed to provide performance insights that help fleets make informed business decisions. For this release, the Analytics Lab is installed by default, and available to all AT&T Fleet Management users — except for white-labelled and FedRAMP Customers. Using fleet telematics data, the Analytics Lab combines easy-to-use Apps with templates and models from our own API Explorer to analyze, visualize, and uncover trends in your fleet's operations. We have a number of experiments available, but are always improving, or adding more. Keep checking back to see if there is one that interests you!

*** NOTE:** To view the Analytics Lab page, users must have the View Analytics Lab security identifier, and must have access to all devices on the page.



Feature name changes

Renamed Vehicles to Vehicles & Assets

Telematics isn't just for vehicles anymore, and neither are we. AT&T Fleet Management is a full-service IoT platform that can connect to any asset, including trailers, generators, and other industry equipment. To better reflect our data acquisition capabilities, we've changed Vehicles to Vehicles & Assets in the main menu, and vehicles to assets throughout the application.

* NOTE: Compliance-related features such as Hours of Service (HOS) and inspection reports will continue to use the term vehicle.

Renamed DVIR to Asset Inspection

We're growing! To support our international Customers, we're changing the name DVIR to Asset Inspection to better associate features with functionality.

Assets

Device replacement messages

Need to replace your devices? Ready for the 3G sunset? Replacing your devices just got easier. We've added two new tools to the Assets page to tell you when to replace your devices, and how to request the replacements from your Reseller.

Users

New currency feature

We've introduced currency support into our Maintenance Reminders and now, users can select their regional currency for all cost-related items, across the application, from the Options page. For fleets that frequently cross borders, the application also supports multi-currency conversions.

New profile setting

Users can now select their regional unit of measurement for units displayed on the Engine Measurements page, from the Options page. Users can also create custom profiles if there are no suitable defaults to choose from.

* NOTE: This feature will be available across the application, including reports, in a future release.

Save Discard changes

Custom Profile Add Show Help

Custom profile name:

Diagnostic Units

Q odometer Bulk edit All

Odometer:

Odometer adjustment:

Raw odometer:

Maintenance Reminders

Log maintenance costs

Users can now record the cost of asset maintenance on the Maintenance Event page. For a detailed analysis, costs can be broken down into parts, labor and tax. This feature also supports multi-currency conversions and the option to select a default regional currency.

Save Cancel

Maintenance Edit Show Help

Enter maintenance details below. The odometer and engine hours may be set to '0' if unknown.

Asset name: JT 2

Maintenance reminder: Heavy Trucks

Maintenance type: Oil change

Date completed: 04/28/21

Odometer reading: 128842 km

Engine hours reading: 232.03 hours

Reference Work Order (optional):

Currency (optional): Canadian dollar - CAD Edit default currency

All currency values will be converted to users' preferred currency when displayed. Exchange rates used in currency conversions are from the Bank of Canada. For details, please read our full [Terms and Conditions](#).

Labor cost (optional): CAD

Parts cost (optional): CAD

Tax (optional): CAD

Total cost (optional): CAD

Comments (optional):

New Maintenance cost columns in reports and bulk import template

We've added new columns to the Data and Summary report tabs for total asset maintenance costs. Users can also import asset maintenance costs from the bulk import template.

ed Engine Hours	Reference Number	Converted	
		Total Cost	Converted Currency
27		300	Usd
27	TCTST-00112233	4090.866	Usd
26			
26	TCTST-00112255	541.0788	Usd
72		10620.0924	Usd
18	TCTST-123-456	16.656	Usd
17	TCTST-321-890	276.096	Usd
0:00		300	Usd
31		237	Usd
15	nilam test csv	704	Usd
15	nilam test csv	704.8	Usd
15	nilam test csv	705.6	Usd
15	nilam test csv	706.4	Usd
15	nilam test csv	684	Usd
100	move the babies	200	Usd

	F	G	H	I	J	K	L
ng*	Reference/Work Order	Comment	Labor Cost	Parts Cost	Tax	Total Cost	Currency Unit
0	W578	Any comment	20	30	10	60	USD

New date picker options for upcoming maintenance

For fast access to upcoming maintenance events, we've added options for Next Week and Next Month in the date picker.

Excel® file support for importing bulk maintenance records

Users can easily import maintenance records into an Excel spreadsheet in both .CSV and .XLSX formats.

General Bug Fix

General bug fixes for UI and user experience improvements.

Engine Faults

Redesigned Engine Faults page

The Engine Faults page has been enhanced, and now includes the following:

- Compact table layout.
- Ability to view/hide columns.
- Filter options for source (vehicle or telematics) and/or protocol.
- Total number of times a fault was logged.
- View options for Fault Code, Description, Current Status and more.

Fault Code	Description	Current Status	Times Logged	Source	Protocol	Advanced Details
Dispatch 123						
139	Telematics device fault: GPS quality poor (bad dev...	Pending	3	Telematics Device	Telematics Device	
Dispatch 234						
P26B7	Engine coolant bypass valve "C" control circuit/open	Active	14	Vehicle	OBD with Source A...	No sub type informat
Dispatch 456						
377	Device reset due to parameter change	Pending	1	Telematics Device	Telematics Device	
Dispatch 567						
P1E00	Proprietary OEM fault, description unavailable	Active	10	Vehicle	OBD with Source A...	No sub type informat
166	ALERT: Accident limit for acceleration exceeded	Active	2	Telematics Device	Telematics Device	
P0D3E	Battery charger input voltage sensor circuit range/...	Active	10	Vehicle	OBD with Source A...	No sub type informat
168	General vehicle warning light is on	Active	10	Telematics Device	Telematics Device	

New filters for Engine Faults reports

Added new filter options to Engine Fault Reports. Options are also available for Dashboard and Email Reports. Faults can be filtered by:

- Source of fault (vehicle/telematics).
- Engine protocol.
- Engine diagnostic.

ADDITIONAL REPORT OPTIONS

Show dismissed faults: Yes No

Source: All Vehicle Telematics

Protocol:

Diagnostics:

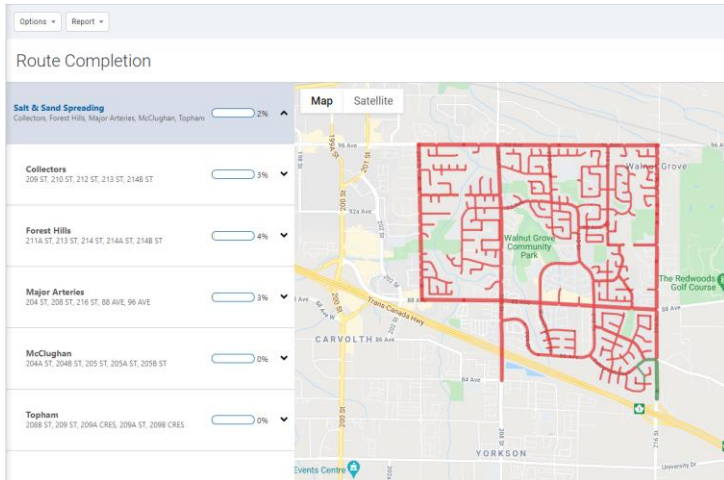
Display all diagnostics

Public Works

New Public Works Route Completion Reports (Feature Preview)

To ensure valuable infrastructure is serviced adequately while controlling costs and tracking material usage, the Route Completion features are now available to Public Works users. Government agencies who manage assets such as salt spreaders, snowplows, street sweepers, and waste management assets will find this feature useful for complying with maintenance and service standards.

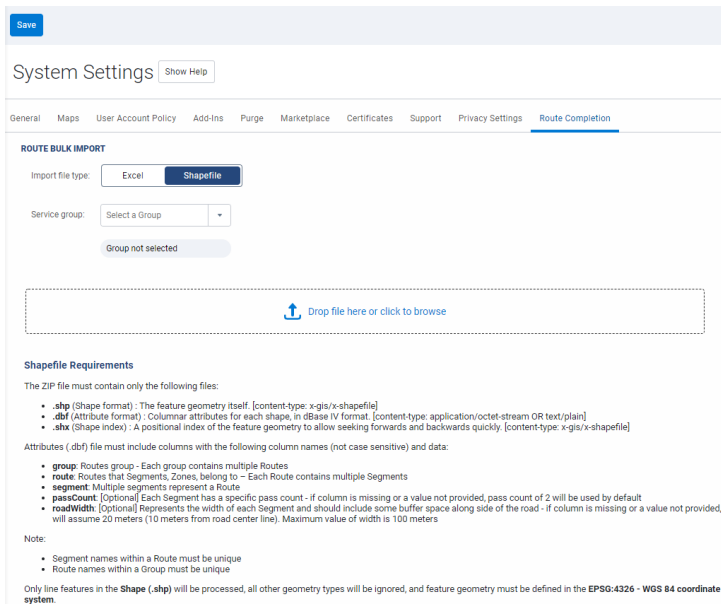
Be sure to enable Feature Preview, and visit the System Settings page, where you can import your routes. Once imported, return to the Map and press the Route Completion button at the top.



We've also added two new built-in reports: Standard and Advanced Route Completion Reports.

Ability to upload Shapefile for Route Completion (Feature Preview)

Routes can now be uploaded to AT&T Fleet Management using Shapefile Upload under System Settings > Route Completion.



New Route-based option for material management report (Feature preview)

Material Management Reports can now be generated for any Route Completion routes that are uploaded. This new report provides detailed and summary totals for Winter Operation materials (solid, pre-Wet, anti-ice), and operations activities (spread time, plow distance), per service group, route group, and routes.

The screenshot shows a web interface for generating reports. At the top, there are two dropdown menus: 'Options' and 'Report'. Below them is a 'Date Period' section with a list of options: Today, Yesterday, This week, Last week, This month (highlighted in blue), Last month, and Custom. To the right is a 'Display Options' section. It includes a 'View by' dropdown with 'Trip' and 'Route' (selected) options. Below that is a 'Service group' dropdown with a search field and a dropdown arrow. The selected value is 'Snow Removal'. Next is a 'Route completion groups or routes' dropdown with a search field and a dropdown arrow. The selected value is 'Forest Hills'. Below that is a 'Vehicles' dropdown with a search field and a dropdown arrow. The selected value is 'None'. There are three 'Reset selection' buttons corresponding to the Service group, Route completion groups, and Vehicles dropdowns. At the bottom right of the 'Display Options' section is an 'Apply changes' button.

Language

New language support

Added language support for Czech and Swedish.

AT&T Fleet Management security identifiers

Added the following security identifiers in AT&T Fleet Management

- View route completion reports: Allows a user to view Public Works Route Completion Reports.
- Administer device share: Allows a database user to extend their telematics services to another database.
- View device share: Allows a user to view telematics services extended to their database from another database.
- Administer user device link: Allows a user to create a link between a user and a device. (API only).
- View user device link: Allows a user to view existing links between users and devices (API only).
- View analytics lab experiments: Allows a user to view the Analytics Lab menu under Dashboard & Analytics.

General Improvements

- Implemented bug fixes and added new translations
- Increased the area activity search to 72 hours from 24 hours
- Updated the page that follows the Login to get started button that users click via email after registering a database to be the Add Asset page
- Added a select all in filter option on the Zones page for bulk editing
- Added a checkmark to indicate the status of a message (sent, delivered, read)
- Added phone number and website to the System Settings feature

- Added the ability to reject new installation records

SDK and Add-In updates

Data Intake Gateway (DIG)

DIG is our new platform for integrating custom telematics data into AT&T Fleet Management.

APIv1 JSON Serialization

To reduce the duration of process-intensive requests with large JSON payloads, the AT&T Fleet Management JSON-RPC API now uses System.Text.Json instead of Newtonsoft.JSON to serialize JSON data sent using the API. This change includes backward compatibility with Newtonsoft.JSON, with the following exception: Numbers with decimals will no longer be serialized using the decimal followed by a zero, if it is a whole number.

Nuget Package

The Nuget Package now targets .NET Standard 2.0,.NET Standard 2.1 and .NET 5.0. To improve serialization and deserialization performance, the Geotab.Checkmate.Objectmodel Nuget Package version 5.7.2102 replaced the JSON serialization library from Newtonsoft.JSON, with System.Text.Json.

* NOTE: Due to the performance improvement with System.Text.Json, the existing rate limit OverLimitException may be surpassed when calling the GetFeed API in a tight loop.

SDK Site

SDK site adjusted for AODA compliance.

Generator Add-in

New Geotab Drive Add-in features start/stop, hook and notifications added to generator-addin.

DeviceSearch

Keywords property expanded to include EngineVehicleIdentificationNumber, VehicleIdentificationNumber and SerialNumber properties.

DeviceShare, DeviceShareSearch, DeviceShareType, DeviceShareSearch

Beta support for DeviceShare functionality added. This object is used for Extendable Services billing purposes.

DutyStatusLogType

Added Work, Rest, and WorkExemption properties.

ExceptionRuleBaseType.cs

Route Completion displays the completion status of custom routes and roads to help users maintain compliance with service level agreements. A route is completed based on the rule and conditions set by the user. Route completion exceptions represent servicing activity for a set of previously defined routes, within a service group.

A new "RouteCompletion" category is used to classify a rule in the Route Completion Report. Route completion rules are returned with unfiltered requests to the Get<Rule> API, or with the category filter "UserExceptionRules". They can also be searched by "RouteCompletion".

FaultData

Added FaultStates. This allows faults to represent more precise and potentially multiple fault states. In the future, FaultState will be deprecated, though still available for backwards compatibility.

FaultState

Removed PendingOff, ActiveOff, InactiveOff, as more accurately represented in FaultStatus.

FaultStateProvider

Describes the current FaultState when a single fault is present.

FaultStatus

Complements the FaultStates property of FaultData. Describes the status of a fault.

GetFeed<TextMessage>

To comply with the GetFeed contract and avoid performance loss, fixed a bug that applies both fromDate and fromVersion when both are supplied in the API request. When fromVersion is supplied, fromVersion will be ignored.

* NOTE: This fix may return more records when both fromDate and fromVersion are supplied with before the given dateTime is returned.

Also, fixed a bug where toVersion is returned as 0, when a search returns no results. Now, when no results are returned, ToVersion is returned as the latest Feed version.

HosRuleSet

Added StandardHoursSoloExemptionHours.

RoutePlanItem

Added PassCount. The expected number of passes through the Zone.

RouteSearch

Added Groups search option to allow searches for Route Completion routes (RouteType.Service) that are members of GroupSearch(s). Only returns routes that are members of a service group hierarchy.

RouteType

Added Service route type.

SecurityIdentifier

Added RouteCompletionReport.

UserSearch

Added UserSearchType property to address IsDriver search limitation for Driver or Drivers, and Users. UserSearch allows searching for drivers and users, users who are not drivers, and only users who are drivers. IsDriver will be deprecated but remain backwards compatible.

UserSearchType

Added values to the UserSearch, UserSearchType properties.

To learn more about AT&T Fleet Management, visit att.com/fleetmanagement.